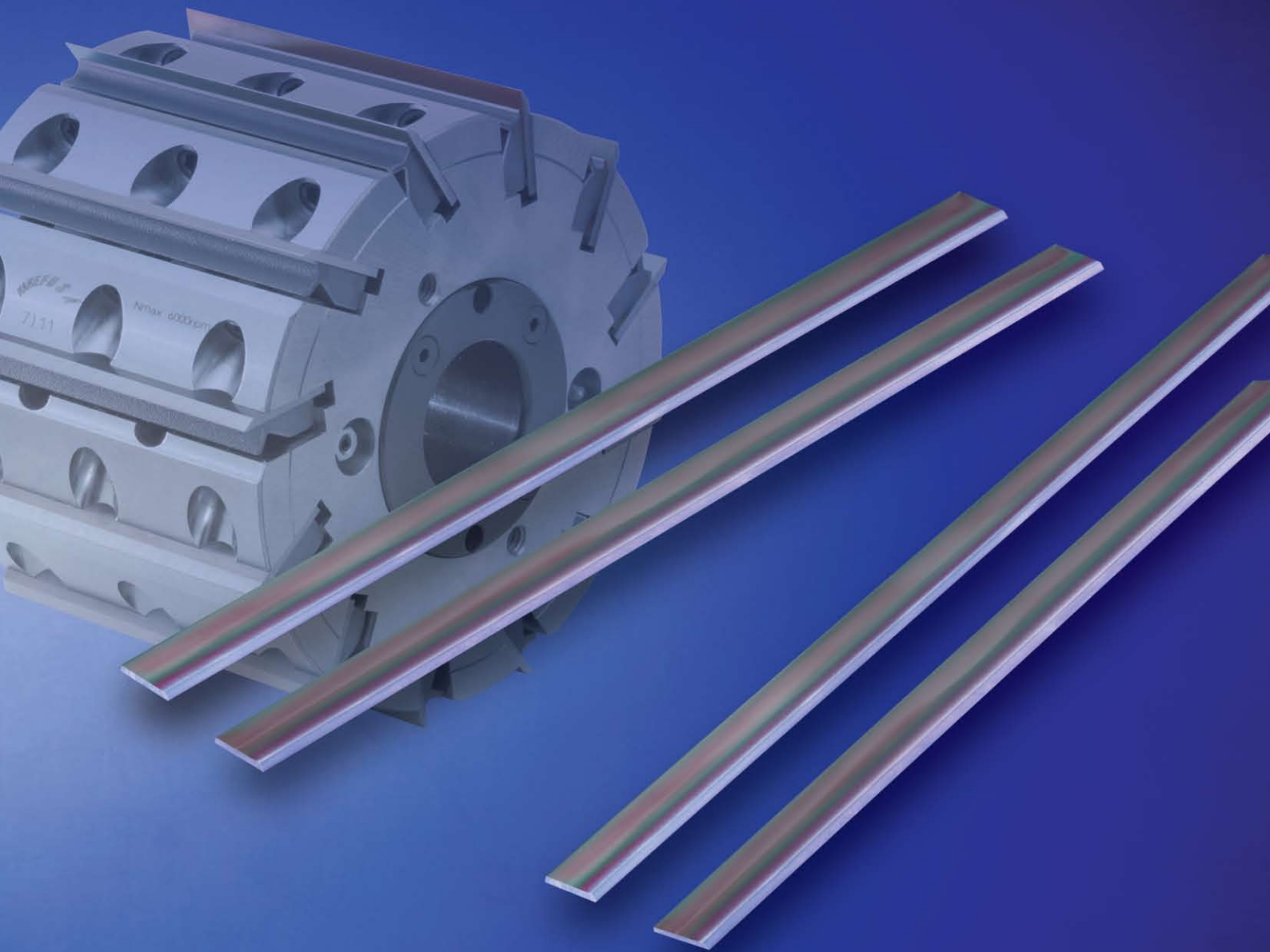


ST-1 Revo

New

KANEFUSA

Now even longer cutting Life!
Coated Planer Knives



Kanefusa - A New Dimension of Performance



JQA-QM3710



JQA-EM3137
Head Office
Factory

*Specifications and appearance are subject to change without notice.
Photographs and illustrations may vary from actual products.
If necessary, please contact us.

0-61-0
[Class] [Article] [Revision]

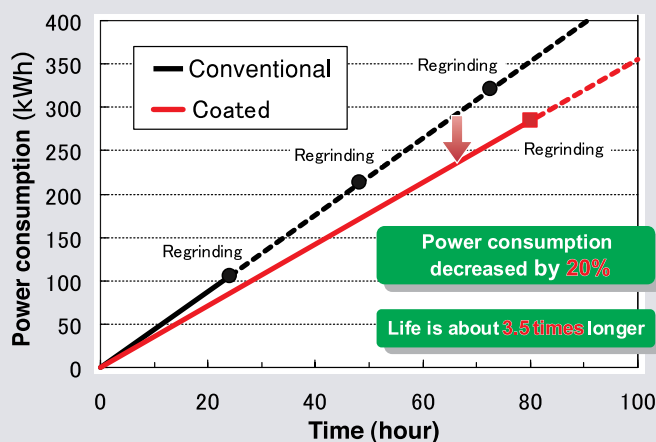
ST-1 Revo

Even longer sharp edge thanks to Newer coating

KANEFUSA is the pioneer and worldwide leader in the development of advanced cutting edge materials for the woodworking industry. The intensive research and development effort has added a new dimension, ST-1 Revo, to our already very much praised "Advanced Material Technology".

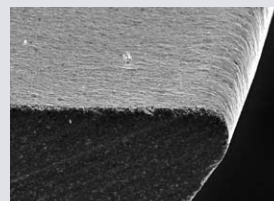
■ Comparison between Conventional knife and "ST-1" Knife

■ Less Power Consumption

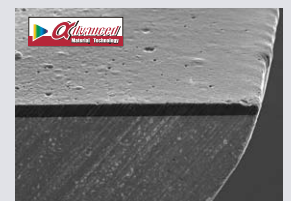


*Planer knife : Conventional and "ST-1" planer knives were tested at Japanese glue lumber company, cutting Spruce and Red wood.

- The "ST-1" cutting edge stays sharp with only trace of wear.
- While regular knives tear-out the grain, "ST-1" knife provides a smooth finish throughout the entire run-time.



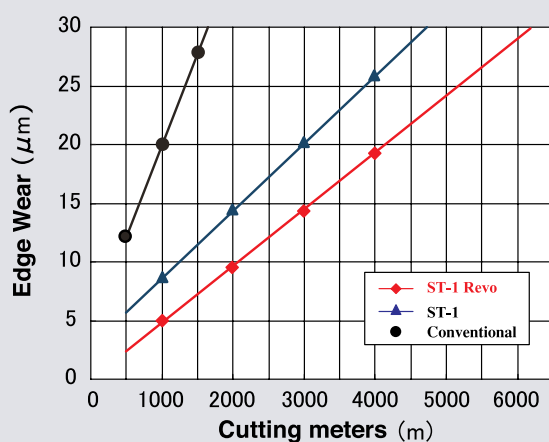
A conventional High Speed Steel cutting edge is already round after cutting only 1000 m of Spruce.



The Advanced Material Technology "ST-1" cutting edge is still sharp after 1000 m.

■ Comparison between "ST-1" and "ST-1 Revo" Knife

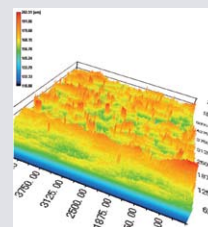
■ Longer Cutting Life



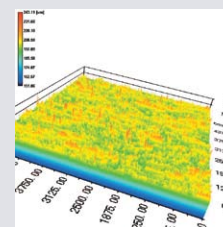
Better surface finish

The surface which was measured by "Laser Surface Profile Measuring Apparatus" evidently explains the differences in cut quality between "ST-1" and the new "ST-1 Revo" cutting edges.

A better cut surface eliminates or reduces subsequent finishing processes and leads to a higher product quality.



ST-1 (coating)



ST-1 Revo (New coating)

*Cut surface after cutting Spruce 2,500m

<http://www.kanefusa.net>

KANEFUSA CORPORATION

Head Office / Factory
1-1 Nakaoguchi, Ohguchi-cho, Niwa-Gun
Aichi-ken, Japan, Postal Code 480-0192
Tel : +81 587 95 7221
Fax : +81 587 95 7226
E-mail: sales-ex@kanefusa.co.jp

KANEFUSA EUROPE B.V.

De Witbogt 12, 5652 AG, Eindhoven, The Netherlands
Tel : +31 40 2900901
Fax : +31 40 2900908
E-mail : rocky.hayashi@kanefusa.nl

© 11.05.1000