



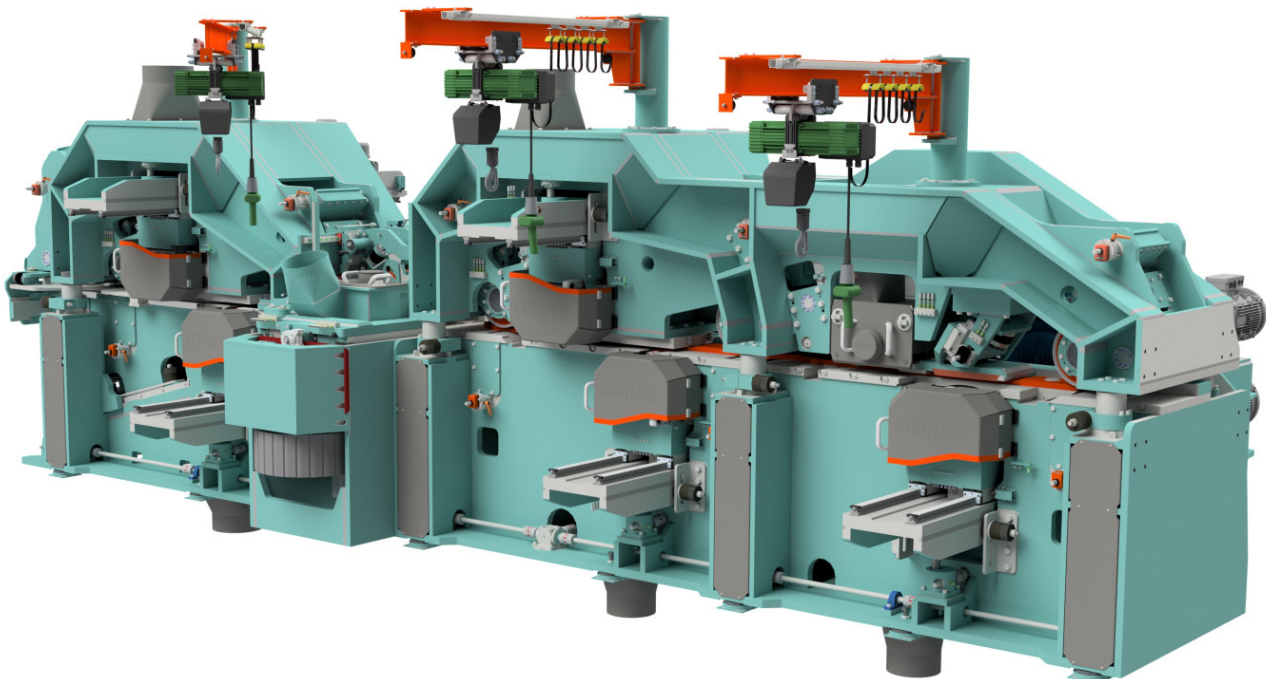
Masterpiece of all our innovations

LEDINEK - PLANING PROFILING - STRATOPLAN S300 / S750

Stratoplan S300 / S750

The STRATOPLAN is a productive machine, not an all-rounder but a concentrated product of all our innovations and experience essential for reduction of costs, labour and materials in a highly productive industrial environment.

This heavy duty planer was developed specifically for rugged use in planing and sawmills and is most suitable for processing of planed lumber, lamella and splitting. Everything is focused on providing a robust and reliable planer that can cater to the growing demands for optimisation of resources.

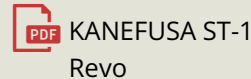


Highlights:

- Thickness/thickness setup
- Fixed guiding fence at saw unit
- Fixed or floating vertical spindles
- Rotation controlled fast positioning system
- Ledinek's exchangeable cuttershaft system
- Automatic adjustment for low downtime during retooling and setup
- Directly driven tools and feeding roll
- Condition monitoring systems
- Reduced number of components for reliable and low maintenance operation

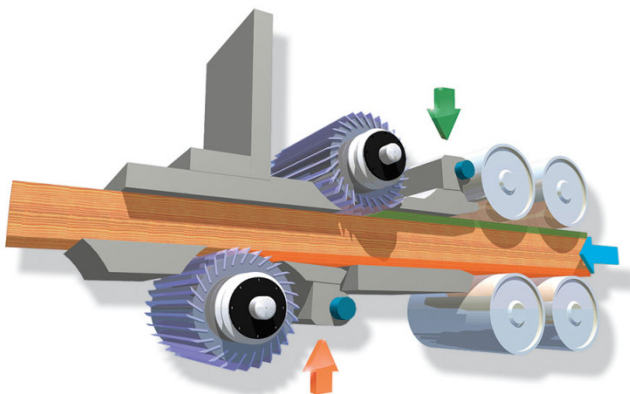
Originally equipped with Kanefusa ST-1:

- Our straight cutter heads are equipped with Kanefusa ST-1 Revo knives
- Less power consumption
- Longer cutting life
- Better surface finish
- New coating



Stratoplan - Master of Savings

Advantage of thickness-thickness calibration



System is designed for calibration of boards before further processing and laminations after fingerjointing or everywhere where minimal cutoff is preferred.

1. Calibration with **top shaft**

Board is pushed DOWN against the working table. Cutoff varies between the set top thickness and actual thickness of the board.

2. Calibration with **bottom shaft**

Board is pushed UP, against the fixed plate. Final calibration to required thickness, due to variation of cutoff on the first shaft, all material has been saved on the thinnest spot.

3. Reduce the thickness of input material

Save money!

Condition monitoring

Comprehensive condition monitoring systems for temperature or vibration can be installed throughout the machine. Depending on number of spindles and maximal available speed monitored points can include spindle bearings, guiding fences, pressure plates, pressure shoes, motor housings, feeding systems or any other area subject to continuous or intermittent load.

LEDINEK knife clamping system for back serrated knives

Tools with back serrated knives use only 2 screws per wedge to hold the knife in place. Installation and setting of the serrated knives can be done faster and easier, without special knife adjustment devices.

Technical data

STRATOPLAN S300 / S750






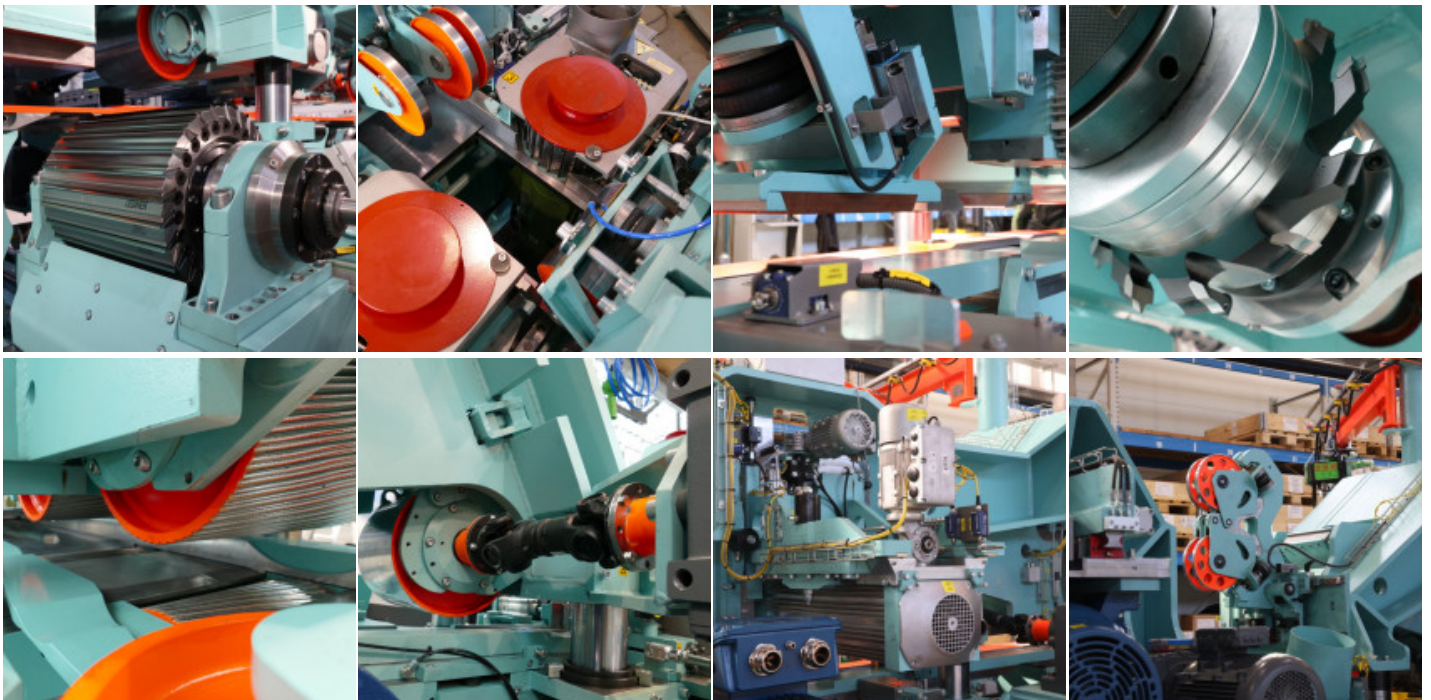
| | |
|---|--------------------------|
|  Width | 30 - 310 mm |
|  Thickness | 19 - 125 mm |
|  Diameter of cutterheads | 305 / 330 mm |
|  Diameter of feeding rollers | 300 mm |
|  Feeding speed | 300, 400, 550, 750 m/min |

Photo gallery



Related products



▶ Powerfeed

Perfect feeding for fastest and strongest planers

[MORE](#)



▶ GML Tool grinders

Fully automated grinding machine for straight knives mounted in hydro cutter tools

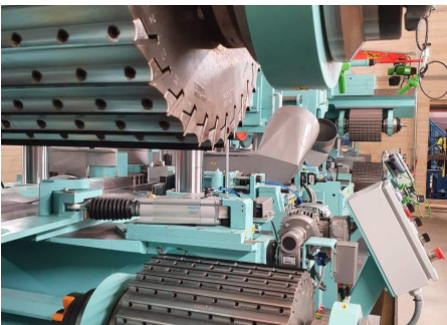
[MORE](#)



▶ Tool measuring system

Tool presetter for profiling tools

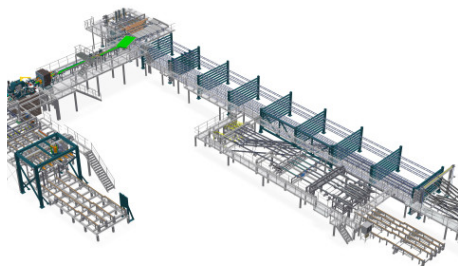
[MORE](#)



▶ Stratoplan S1200

Ultra-high speed planer for highest feeding speed and productivity

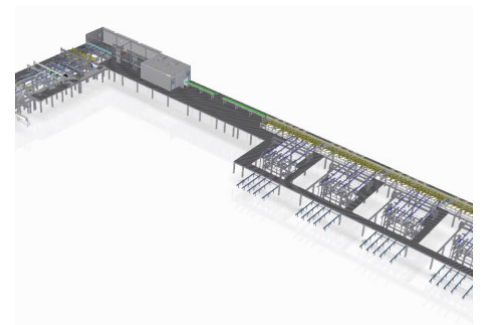
[MORE](#)



▶ Planing sorting line 300 m/min

300 m/min grading and sorting line with 8 film tray storages

[MORE](#)



▶ Planer mill 250 m/min

250 m/min Pre-planing- and Sorting line for engineered timber production

[MORE](#)