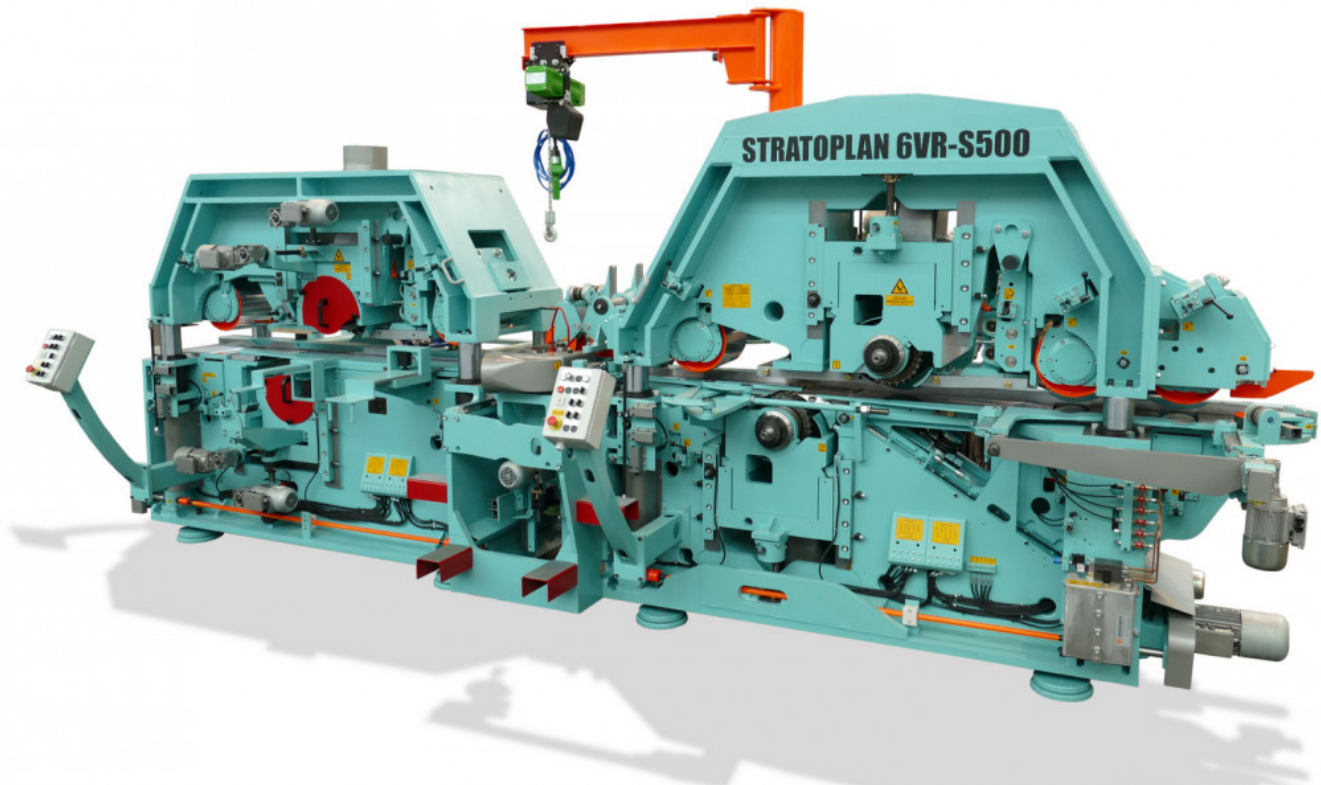


Stratoplan S200 / S500

The STRATOPLAN S200 / S500 is a serious machine, not an all-rounder but a concentrated product of all our innovations and experience essential for reduction of costs, labour and materials in a highly productive industrial environment.

This heavy duty planer was developed specifically for rugged use in planing and sawmills and is most suitable for processing of planed lumber, lamella and splitting. Everything is focused on providing a robust and reliable planer that can cater to the growing demands for optimisation of resources.




Highlights:

- Thickness/thickness setup
- Floating vertical spindles
- Optional active assisted floating for reduced cutoff
- Ledinek's exchangeable cuttershaft system
- Automatic adjustment for low downtime during retooling and setup
- Directly driven tools and feeding rolls
- Reduced number of components for reliable and low maintenance operation

Originally equipped with Kanefusa ST-1:

- Our straight cutter heads are equipped with Kanefusa ST-1 Revo knives
- Less power consumption
- Longer cutting life
- Better surface finish
- New coating

 KANEFUSA ST-1 Revo

Stratoplan - Master of Savings

Advantage of thickness-thickness calibration

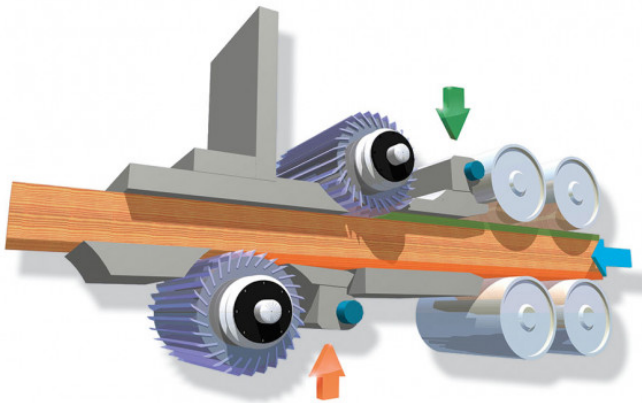
after fingerjointing or everywhere where minimal cutoff is preferred.

System is designed for calibration of boards before sorting and laminations

Ledinek Engineering d.o.o.

Slivniška cesta 18, SI-2311 Hoče, Slovenia

T: +386 2 61300 51, F: +386 2 61300 58, E: info@ledinek.com



1. Calibration with top shaft

Board is pushed DOWN against the working table. Cutoff varies between the set top thickness and actual thickness of the board.

2. Calibration with bottom shaft

Board is pushed UP, against the fixed plate. Final calibration to required thickness, due to variation of cutoff on the first shaft, all material has been saved on the thinnest spot.

3. Reduce the thickness of input material

Save money!

Active assisted floating of vertical spindles






Included on all Stratoplan VA type planers (can not be combined with other types) is the active assisted floating of vertical spindles. Every board is independently scanned as it approaches the planing units. In real-time an original LEDINEK software calculates the movement of vertical units which follows the curve of the boards.

Depending on excess width, the optimization software distributes the cutoff between both sides, thereby allowing deviations to straighten the boards. Result is an exact calibration without excessive cutoff in all conditions.

Combined effects of thickness-thickness planing and active assisted floating provide unparalleled material saving effects, which can not be achieved on any other planer.

Technical data

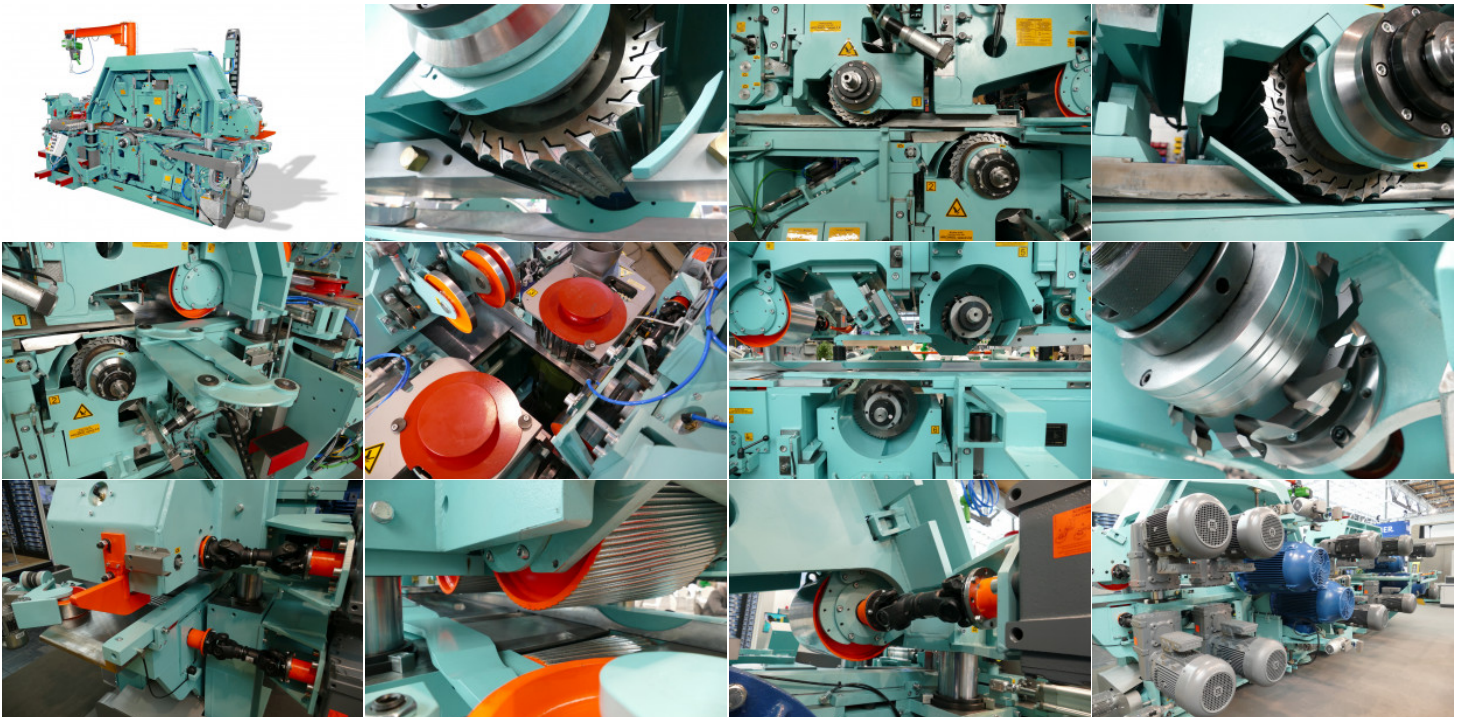
STRATOPLAN S200 / S500


 Width	60 - 310 mm
 Thickness	19 - 130 mm
 Diameter of cutterheads	300 mm
 Diameter of feeding rollers	310 mm
 Feeding speed	200, 250, 350, 500 m/min

Machine Models

- **Stratoplan 4V-S250**
- **Stratoplan 4VA-S250**
- **Stratoplan 6VR-S250**
- **Stratoplan 4V-S350**
- **Stratoplan 4VA-S350**
- **Stratoplan 6VR-S350**
- **Stratoplan 4V-S500**
- **Stratoplan 6VR-S500**

Photo gallery



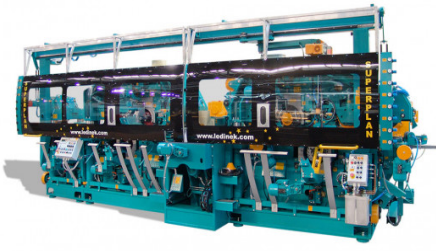
 [Stratoplan S200/S350/S500 product brochure](#)

Related products

Ledinek Engineering d.o.o.

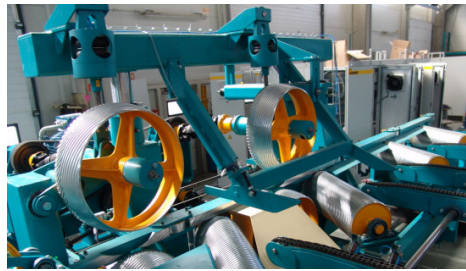
Slivniška cesta 18, SI-2311 Hoče, Slovenia

T: +386 2 61300 51, F: +386 2 61300 58, E: info@ledinek.com



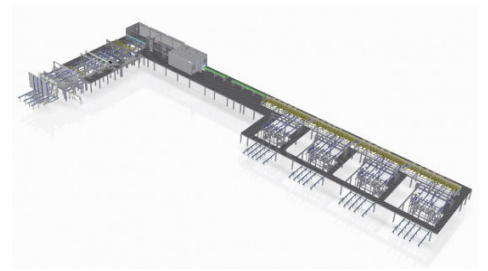
SUPERPLAN S150 / S400

Superb high capacity and high speed moulder for the most demanding profiling tasks.



POWERFEED

Perfect feeding for fastest and strongest planers



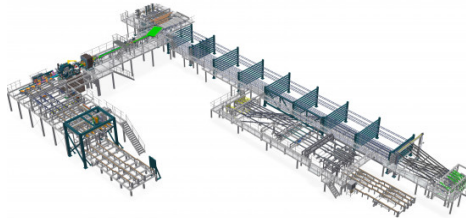
PLANER MILL 250 M/MIN

250 m/min Pre-planing- and Sorting line for engineered timber production



GML TOOL GRINDERS

Fully automated grinding machine for straight knives mounted in hydro cutter tools



PLANING SORTING LINE 300 M/MIN

300 m/min grading and sorting line with 8 film tray storages