

LEDINEK - PLANING PROFILING - SORTING LINE FOR SEPA FINLAND

Sorting line for Sepa´s the existing finger jointing line!

Sepa adds an automated sorting line to the existing production

After the Finger jointing line installed in 2016, Sepa made another big investment. Replacing the existing old-fashioned, labour intense sorting, line with a new fully automated one.

The new sorting line has a vacuum destacking and infeed system to the 400 mm wide planer. A bandsaw just behind the planer gives flexibility for different new products.

A scanner with AI learning network is checking for defects the customer has "learned" the machine to recognize. Together with the proof load bending machine, the line delivers high strength timber for the following finger jointing process. Defects to be removed are marked by a line of luminescent ink, later detected by the X-Cut in the finger jointing line.

The line sorts to 3 grades C24, C30/35 and C45 also rejected boards. The 3 stackers put the packages on the roll conveyor to the strapping machine. After this packages are transferred directly to the finger jointing hall or to the external storage.

Company: **Sepa Oy**

www: **SEPA OY**

Location: Keitele / Finland

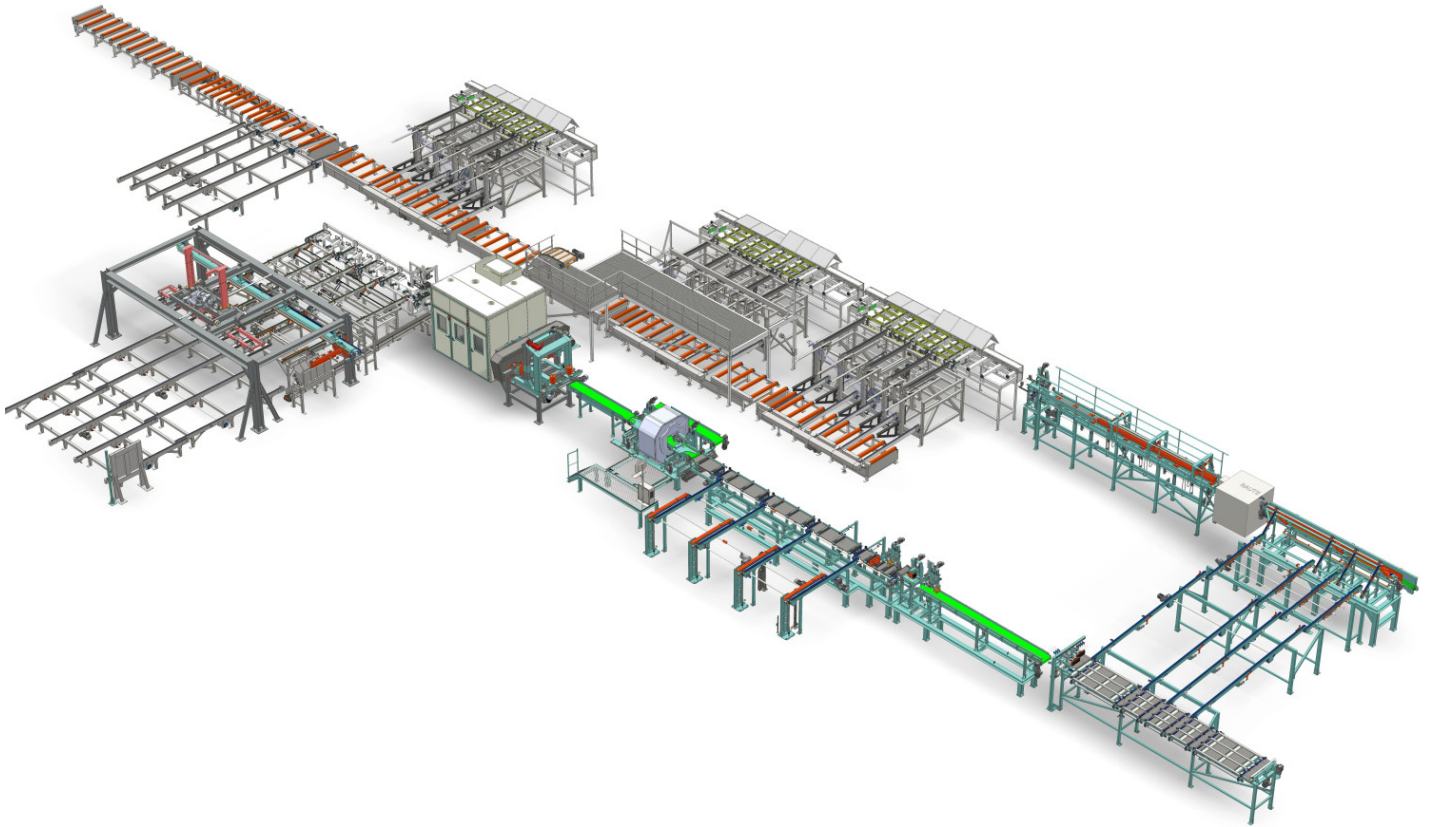
CEO: Esko Ovaskainen

Project leader: Aku Lindgren

Employees: 100

Timber species: Spruce, Pine

Production capacity: over 30.000 m³ / Year / 1 shift



Sorting line for the finger jointing line

1. Cross chain conveyor for packages
2. Vacuum destacking device
3. Cup detection and turning station
4. Infeed unit to the four-side planer
5. Europlan 400 mm wide planer 120 m/min with horizontal bandsaw
6. Horizontal spiral cutter block with carbide inserts
7. Horizontal bandsaw – tiltable for splitting
8. Smarti Scanner for defects with AI technology
9. Aligning rollcase conveyor with side sweep lug chain
10. Cross chain conveyor with layer backholders
11. Outfeed of the proof load bending machine
12. Aligning rollcase sorting conveyors with side sweep lug chains
13. iPlan Manager planing and sorting management system
14. Printing station for grades and sizes
15. Stacking machine
16. Roller conveyor for sorted packages

Facts

- Board width 70 - 250 (400) mm
- Board thickness 20 - 80 mm
- Sorted to C24 up to C45
- Installed electrical power, approximately 260 kW
- Air volume for extraction 11.200 m³/h
- Fully automated planing and sorting process

Photo gallery



[View Hightech Machinery by Ledinek](#)

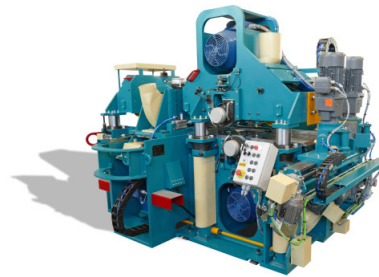
Related products



▶ Vacuum de-stacking

Every production needs an entrance.

MORE



▶ Europlan 300 / 400 / 600

Universal planer for boards, posts and beams. Used in production of KVH, laminated timber beams and as pre- and lamella planer.

MORE



▶ HTBS

Horizontal band resaw

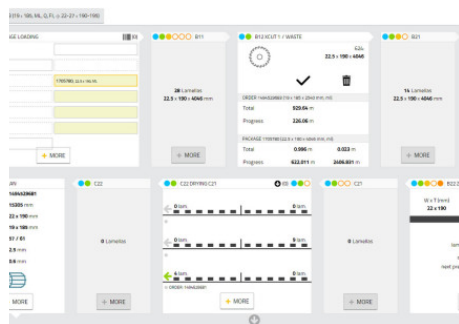
MORE



▶ Simple stackers

Perfect package

MORE



▶ iPlan Manager

Grading, planing and sorting management system

MORE



▶ Automation_solutions

Complete solutions in machine and plant engineering.

MORE