

250 m/min Sorting line

In the scope of a large greenfield investment project for manufacturing of engineered laminated timber products in northern Russia, LEDINEK designed and built an automated high volume sorting line for grading and sorting of boards intended for glulam and cross laminated timber production.

Another important request from the customer was the expansion of their product range in a way that does not influence the current production in the engineered timber production. An independent high capacity line built around a 7 spindle high-speed SUPERPLAN planer and moulder was the perfect solution for both tasks.

Case

- Pre-planing and Profiling
- Scanning
- Sorting
- Softwood for manufacturing engineered timber products
- Production of profiled boards

Key components of the solution

- Tilting table with board unscrambler
- Feeding equipment for 50 pcs/min
- SUPERPLAN 7V-S250 planer and moulder
- GOLDENEYE 702 X-ray scanner from Microtec
- 4 high capacity stackers

Photo gallery

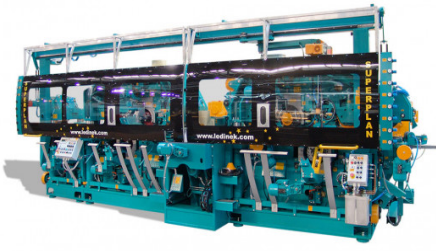


Related equipment

Ledinek Engineering d.o.o.

Slivniška cesta 18, SI-2311 Hoče, Slovenia

T: +386 2 61300 51, F: +386 2 61300 85, E: info@ledinek.com



SUPERPLAN S150 / S400

Superb high capacity and high speed moulder for the most demanding profiling tasks.



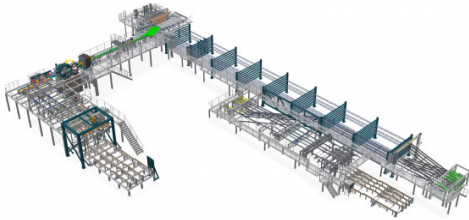
TILTING DE-STACKING

Every production needs an entrance.



HIGH CAPACITY STACKERS

Stacking machines for different wood products



PLANING SORTING LINE 300 M/MIN

300 m/min grading and sorting line with 8 film tray storages