



Complete CLT production solutions

LEDINEK - ENGINEERED TIMBER - PILOT CLT PRODUCTION LINE IN SWEDEN

Pilot CLT production facility for Södra in Väröbacka

Company **Södra Wood** invested into a pilot plant for CLT production. The idea behind the pilot plant is to explore the different possibilities of the product and create a marketing and production strategy. As Södra operates their own saw mills the utilisation of different timber sizes and grades is also crucial.

The line has been placed in an available building on Södras industrial area (Saw mill & Pulp mill), which was completely renewed and upgraded. The size of the CLT panels is limited to 12 m x 3,0 m x 0,36 m. In the same building is installed also a CNC router to machine the ready pressed CLT elements. This is the first complete Turnkey CLT Line delivered to Sweden. After commissioning is completed the plant goes into test production.

The complete line is integrated under the **X-Lam manager** developed by Ledinek Engineering.

A PC based master computer system for production management, production flow control and visualization, statistics, instant information's and production analysis tools.

Company: **Södra Wood**

Facebook: **Södragroup**

Location: Väröbacka / Sweden

Project Leader: Mattias Wallman

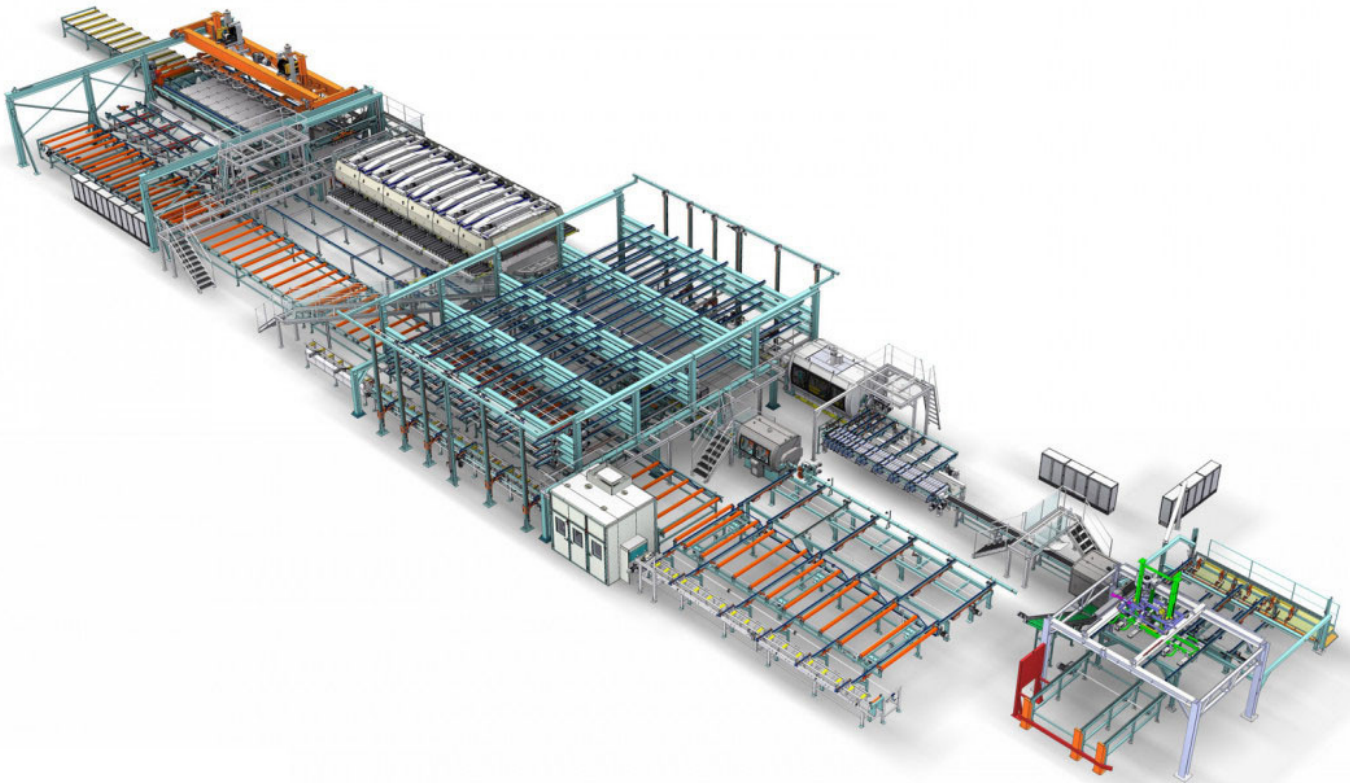
Production Manager: Krister Norberg

Employees: 600

Species: Spruce

Operators: 3+2

Production capacity: 10,000 m³ / y



Turnkey CLT production

1. Vacuum de-stacking of timber
2. Manual marking station for timber defects
3. Reject gate for boards
4. X-CUT S200 cross-cut saw to remove timber defects
5. Infeed system to finger jointing machine
6. Eurozink COMPACT 6-300 kN finger jointing machine up to 6 pcs/min
7. Vertical conveyors to curing storage
8. Multi tray curing storage (3 levels)
9. Infeed to EUROPLAN 4V-S120 planer for laminations
10. Roll conveyor for storage of longitudinal laminations (4 layers)
11. Aligning station for longitudinal layer
12. X-CUT S200 cross-cut saw for cross layer laminations
13. Chain conveyor storage for cross layer laminations (3 layers)
14. Aligning station for cross layer
15. Vacuum layer assembly unit for Longitudinal Layer and Cross Layer
16. OEST controlled PUR (1 component polyurethane) glue application system
17. Solid fast movable PE coated aluminium table for

Facts

- Up to 12 m x 3,0 m x 0,36 m panel size
- Production capacity up to 10.000 m³/year
- 40 m³ Shift production
- PUR glue used for higher capacity
- High flexibility of the CLT production process


CLT panel assembly
18. X-PRESS 12 - cross laminated timber press with up to 0,8 N/mm² pressure
19. Longitudinal CLT panel push off unit with outfeed conveyor
20. Loading ready pressed CLT panels for the CNC router

Photo gallery

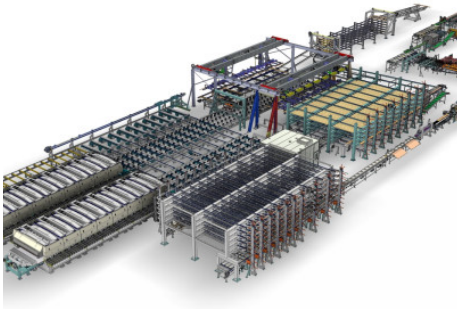




Video

 Ledinek X-Press product brochure

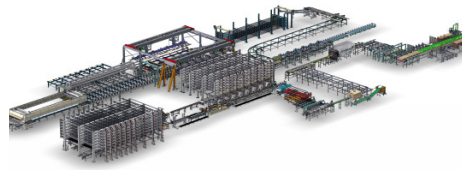
Related products



▶ **CLT production line Norway**

Company Splitkon AS from Åmot in Norway has invested in a new industrial production for large format cross laminated timber panels.

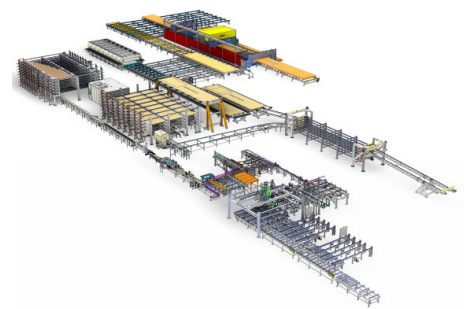
MORE



▶ **CLT production line France**

S.A.S. Piveteau Bois from Sainte Florence has invested in a new industrial production for large format cross laminated timber panels.

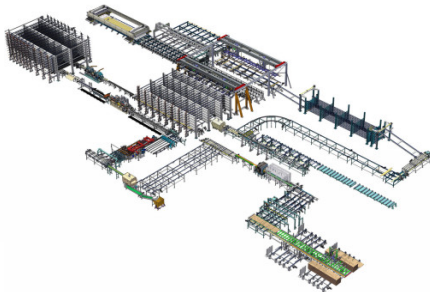
MORE



▶ **CLT production line Australia**

First complete CLT production from one supplier in Australia at XLAM We got the opportunity to supply a CLT production Turnkey solution.

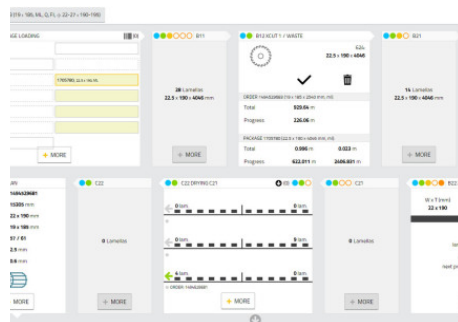
MORE



▶ **CLT production line Japan**

First complete CLT production from one supplier in Japan at Cypress Sunadaya Co., Ltd. We got the opportunity to supply a CLT production Turnkey solution.

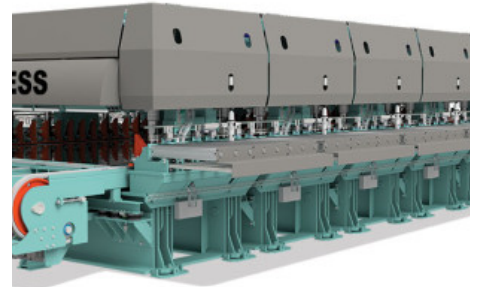
MORE



▶ **X-Lam Manager**

Easy to use PC based process control and visualisation system for the complete CLT production line. Comprehensive visualization and editing possibilities of orders for the production of cross laminated timber

MORE



▶ **X-Press**

Cross laminated timber press CLT Press XPress for excellent quality products

MORE