



# Complete CLT production solutions

## High volume CLT production facility for Södra in Väröbacka

### Turnkey solution convinces Swedish enterprise

After the first pilot plant for the CLT production, **Södra Building Systems** made another bolt move and build a big volume plant. This is the 2nd complete Turnkey CLT Line delivered to Sweden.

Södra did not want any experiments when setting up their first industrial CLT line, but rather a solid, tried-and-tested machinery. Moreover, they wanted all systems to come from a complete supplier. This, however, were only two of many reasons why the Swedish enterprise once again turned to Ledinek.

The complete line is integrated under the **X-Lam Manager** developed by Ledinek Engineering. A PC based master computer system for production management, production flow control and visualization, statistics, instant information's and production analysis tools.

Company: **Södra Building Systems**

Facebook: **Södragroup**

Location: Väröbacka / Sweden

Project Leader: Lina Ahlgren

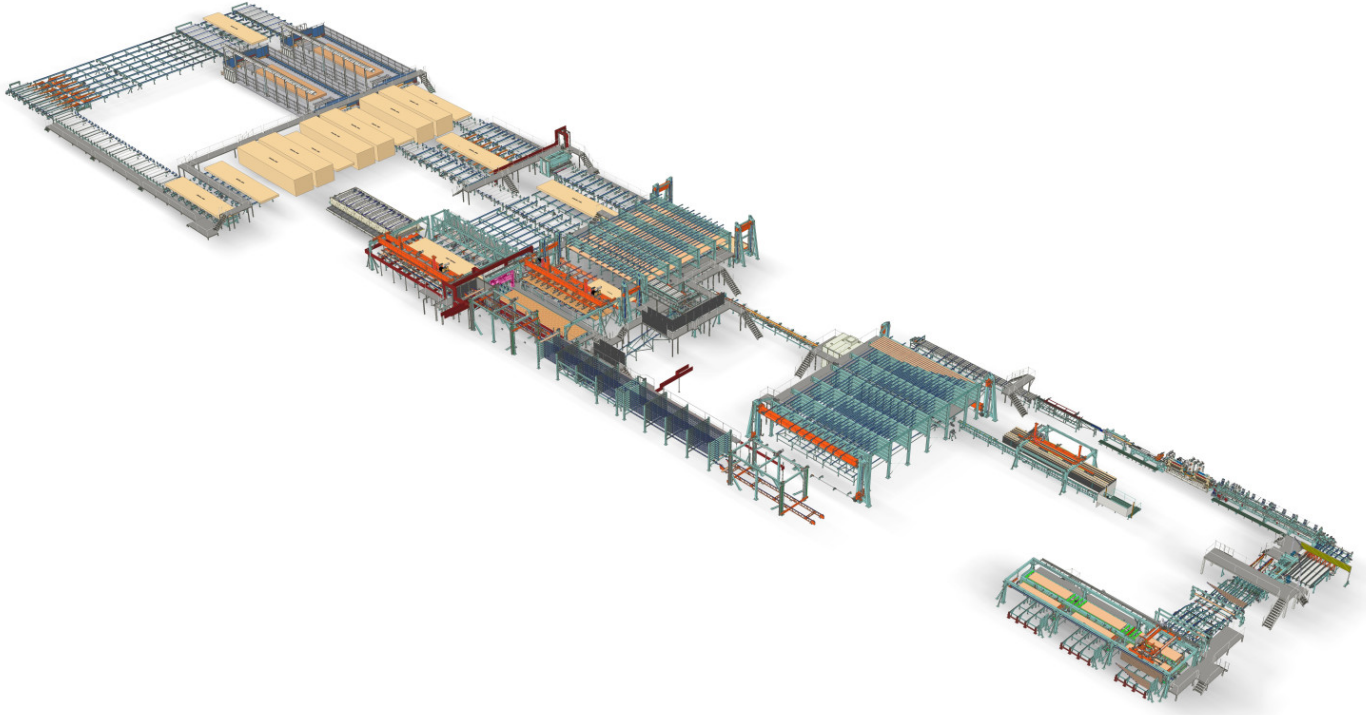
Production Manager: Krister Norberg

Employees: Södra Building Systems 100 employees

Species: Spruce

Operators: 14 per shift

Production capacity: 100.000 m<sup>3</sup> / year



**High volume CLT production facility for Södra in Väröbacka**