

# IMAGE SOURCES



<https://www.vox.com/videos/23424982/mass-timber-milwaukee-high-rise-construction>



<https://chicagoyimby.com/2022/09/sister-cities-worlds-tallest-timber-tower-opens-in-milwaukee.html>



<https://www.thorntontomasetti.com/project/ascent>



<https://www.webuildvalue.com/en/global-economy-sustainability/mjostarnet-wooden-skyscrapers.html>



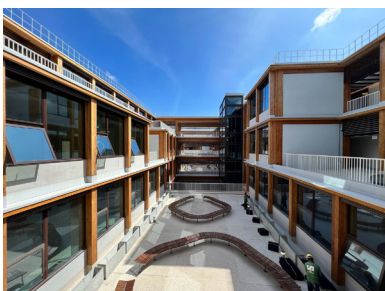
<https://www.hent.no/portfolio/mjostarnet/>



<https://m.facebook.com/mjostarnet/videos/mj%C3%B8st%C3%A5rnet-the-worlds-tallest-timber-building/437003897071048/>



<https://edition.cnn.com/2023/06/05/style/asias-largest-timber-building-opens-in-singapore/index.html>



<https://edition.cnn.com/2023/06/05/style/asias-largest-timber-building-opens-in-singapore/index.html>



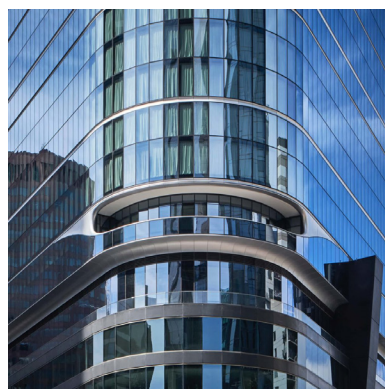
<https://www.hey.ntu.edu.sg/2023/05/04/inside-gaia-asias-largest-wooden-building-in-ntu/>



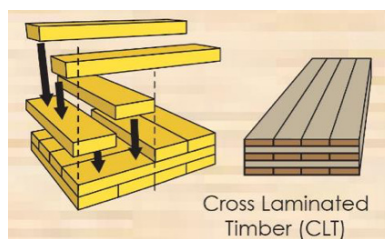
<https://www.archilovers.com/projects/280292/adina-apartment-hotel-melbourne-southbank.html>



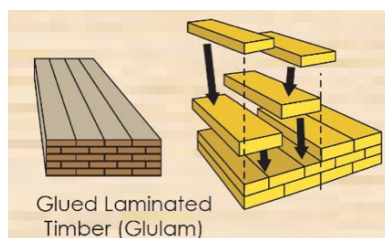
<https://www.klhusa.com/references/55-southbank/>



<https://revolve.media/views/timber-towers>



<https://www1.bca.gov.sg/buildsg/productivity/design-for-manufacturing-and-assembly-dfma/mass-engineered-timber>



<https://www1.bca.gov.sg/buildsg/productivity/design-for-manufacturing-and-assembly-dfma/mass-engineered-timber>



[https://www.itke.uni-stuttgart.de/img/gallery/URBACH/ICD\\_ITKE/URBACH\\_TOWER\\_Photos\\_01.jpg?\\_scale=w:1000,h:1000,q:100,t:3](https://www.itke.uni-stuttgart.de/img/gallery/URBACH/ICD_ITKE/URBACH_TOWER_Photos_01.jpg?_scale=w:1000,h:1000,q:100,t:3)