



Complete GLT Manufacturing Facility

LEDINEK - ENGINEERED TIMBER - GLT UAB JURES MEDIS

Complete GLT Manufacturing Facility for Jures Medis AG

Company **UAB „JÜRÉS MEDIS“** has invested in a Turnkey industrial production for glue laminated timber. The line went into production 2007 and supply the domestic as well as European market with glulam beams. Ledinek got the opportunity to supply a complete GLT line for straight and curved beams.

Company: UAB „JÜRÉS MEDIS“

Location: Medelyno g. 4, LT - 69446 Jürés

Species: spruce, fir, pine

Production capacity: 50.000 m³/y - glulam beams in 2 shifts operation



Main machines:

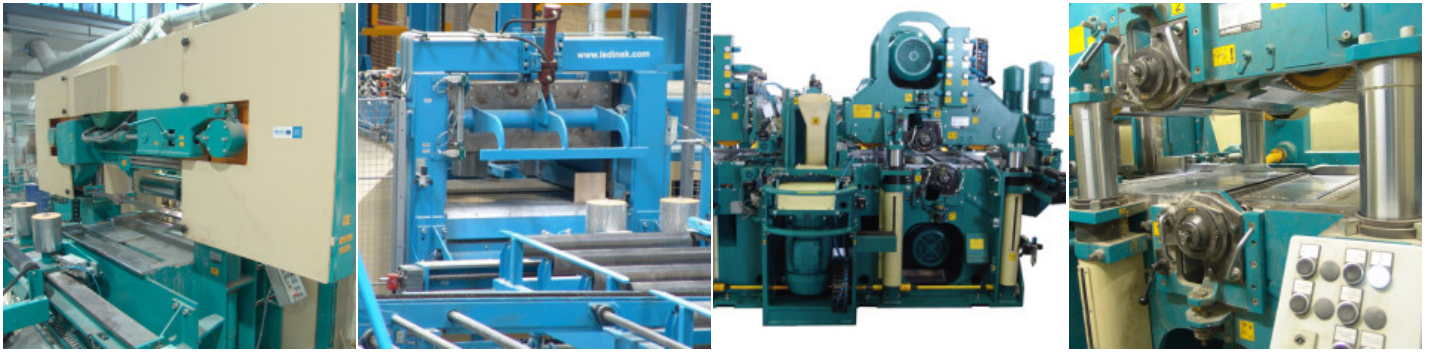
1. Finger jointer Eurozink 12-6 200 kN
2. Lamella planer Superplan LS 5V-S200
3. Glulam Press for straight beams Flexipress 36
4. Glulam Press for straight curved beams Hyperpress N 40m
5. Horizontal band saw HTBS 1400
6. Layer cutting saw LKS 600
7. Beam planer Europlan 600 4V+4F-S60
8. Beam planer Superles 2600 4V

Facts

- up to 50.000 m³/year or 100 m³/shift for glulam beams
- MUF glue with cold setting
- High flexibility of production

Photo gallery

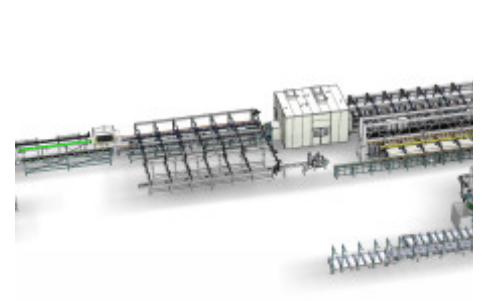
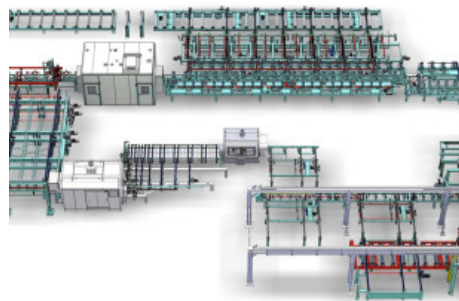
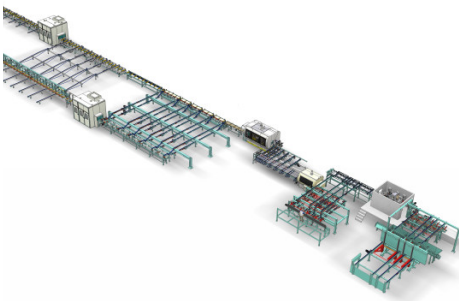




Video

Video

Related products



▶ **Complete GLT Manufacturing Facility for Koles in Slovenia**

▶ **GLT allrounder for customer in Poland**

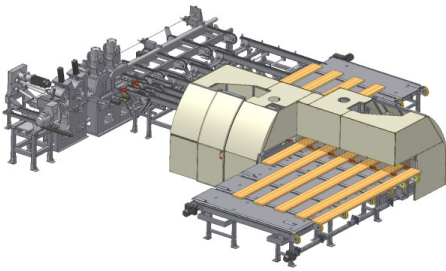
A universal LEDINEK fingerjointing and glulam production line offers the family

▶ **GLT production line in Austria**

Company A. Baumgartner GmbH in Austria has invested in new Turnkey industrial production

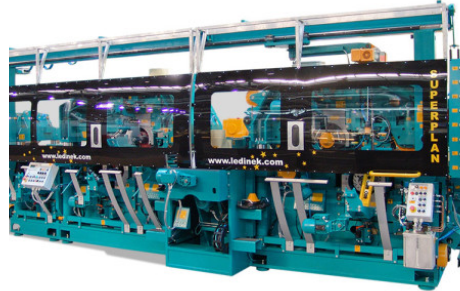
Company Koles d.o.o. in Slovenia has invested in new Turnkey industrial production for glue laminated timber

MORE



owned company Odnova from Spytkowice, Poland a perfect tool to serve the local and international markets

MORE



for glue laminated timber.

MORE



▶ Eurozink 1500

Single piece finger jointing system with high power cycle press for production of solid constructional timber

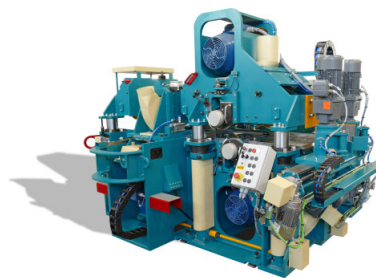
MORE



▶ Superplan S150 / S400

Superb high capacity and high speed moulder for the most demanding profiling tasks.

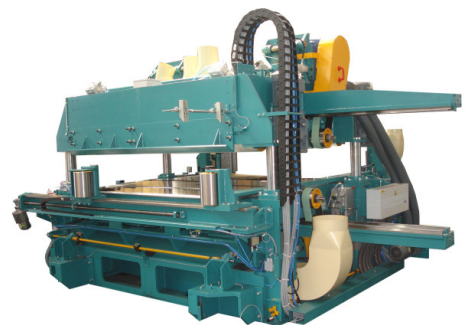
MORE



▶ Flexipress

Universal flat cold press with motorized setup and hydraulic pressing

MORE



▶ Hyperpress-N

For the same product but with lower investment cost.

MORE

▶ Europlan 300 / 400 / 600

Universal planer for boards, posts and beams. Used in production of KVH, laminated timber beams and as pre- and lamella planer.

▶ Superles 2300 / 2600

Extra wide beam planers for straight or curved glulam and any other extra wide engineered products. Excellent surface finish also for largest

[MORE](#)

dimensions.

[MORE](#)