



Complete finger jointing production solutions

LEDINEK - FINGER JOINTING - FINGER JOINTING LINE FOR STORA ENSO

Finger jointing line for Stora Enso new CLT production in Zdirec

Mr. Herbert Jöbstl, Head of Operations, Wood Product SE:

“As in many previous projects, Ledinek has once again demonstrated its competence and reliability in the supply of plant-areas for our CLT plant in Zdirec.”

For our customer Stora Enso, who have already built their fourth CLT line, we have delivered for about a third of the whole equipment for their new project in Ždirec, Czech Republic. The Ledinek plant consists of the infeed equipment, which represents the first part of mechanization and delivers wood to our machines for cutting out the defects (X-CUT S400) and for finger jointing (Kontizink H 5000).

The second part of the mechanization belongs to our planer Superplan 4V-S250 and delivers wood to the machine and after the planer to the press for single-layer panel production. Both the mechanical and electrical installation were completed according to schedule, and we thus also started test production on time, which was an important milestone for both the Stora Enso and Ledinek teams. This will now be followed by the optimization of production and the training of the operators at the plant.

As well, we delivered to the customer two feeding machines Powerfeed 70-S350 and the Superplan 6VR-S350 planing machine for their sorting line. The equipment is in the commissioning and testing phase.

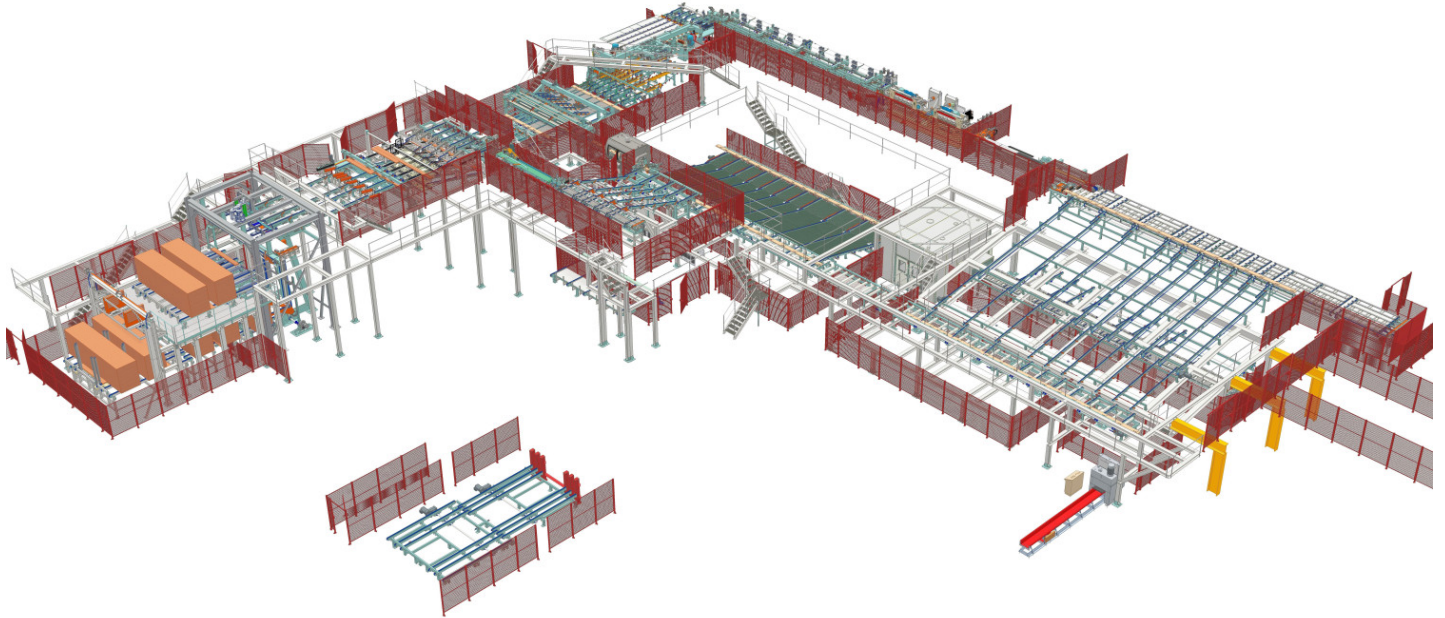
Despite all the challenges we had to overcome over the past months due to the epidemic and extended delivery time for material, the project is progressing well, and we are looking forward to finishing it successfully. The biggest credit here goes to the Stora Enso and Ledinek teams and their good cooperation on the project.

We wish the Stora Enso team all the best and a lot of success with their new investment.

Company data:

Company: **Stora Enso Wood Products Ždirec s.r.o.**
Location: Ždirec nad Doubravou / Czech Republic
Head of Operations Wood Product SE: Herbert Jöbstl

CEO Stora Enso CZ units: Frantisek Vicha
Project Manager: Markus Weiss-Moser
Employees: approx. 110 (4 shift operation)
Species: Spruce
Production capacity: 120,000 m³ / y (4 shift operation)



High performance finger jointing line

10 Loading and unloading of packages by crane
20 Cross Conveyor for incoming packages, with takeover station from crane
30 Scantling pusher placed between packages for stacking
40 Vacuum-destacking unit
50 Chain and roll conveyor for aligning with life belt stop
60 Cross conveyor with single piece feeder
70 Lug chain conveyor with measuring sensors
80 Double Flipper to X-Cut bypass Line
90 Infeed to the markings reading station LUT
100 Infeed X-CUT 400
110 X-CUT S400
120 Transporters after X-Cut with infeed to finger jointer
130 KONTIZINK LH-S160
140 KONTIZINK flying saw unit - patented
150 Rollcase conveyor with side sweep lug chain
160 Aligning roller conveyors
170 Buffer cross curing conveyor for single lamella
180 Optifeed 70-S350
190 Superplan 4V-S350

Facts

- Width 70 - 250 mm
- Thickness 19 - 60 mm
- Cycles 100 1/min
- Typical capacity 5.000 m/h
- Feeding speed 160 m/min
- Diameter of finger cutters 350 mm
- 200 m³ Shift production
- Production capacity up to 100.000 m³/year
- PUR glue used for higher capacity
- Totall installed power: app. 1.790 kW
- Dust extraction requirement app. 82.600 m³/h


200 Team Ledinek

Photo gallery





Kontizink line at Stora Enso CLT production in Zdirec

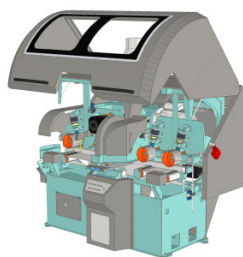
 Ledinek X-Press product brochure

Related products



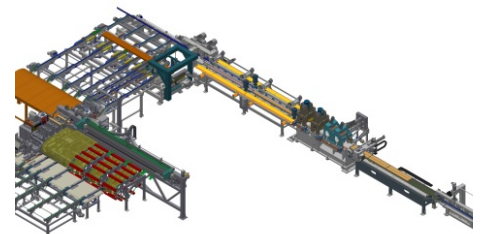
▶ Kontizink L

High speed single piece continuous milling and pressing vertical finger joint system for



▶ X-CUT S400 / S400 L / S200 / S300 XL

High power cross-cut saw for



▶ Kontizink 2500

Single piece milling and pressing system for 20 vertical joints per minute

boards

MORE

large cross sections

MORE

MORE



▶ Kontizink M

High speed single piece
continuous milling and pressing
vertical finger joint system for
boards

MORE