

LEDINEK - ENGINEERED TIMBER - CROSS LAMINATED TIMBER PLANT AT ANTE IN GERMANY

## Ante invests in CLT manufacturing facility

Another company in the Central European timber industry sets the course for the future. From now on, the **ante Group** produces CLT elements for walls and ceilings under the HBS Berga brand. The traditional company is taking the step to become a full-range supplier. Ante has been supplying its customers with products such as sawn timber, planed goods, KVH, glulam and CNC joinery for home and garden needs as well as ecological bio-electricity and pellets for 90 years.

Cross-laminated timber for modern wall and ceiling constructions form the perfect addition to the range of services. The decision to complete the entire product range with cross-laminated production for solid timber construction systems has matured in recent years.

Berga is only five kilometres away from the ante plant in Rottleberode, Saxony-Anhalt, which went into operation in 2007. Existing production halls available for the CLT production, CNC joinery, commissioning and storage with direct motorway a rail connection form the perfect infrastructure to locate a business.

When building the **CLT line**, the family-managed company based in Bromskirchen-Somplar in northern Hesse relies on the latest knowledge and technical standards. In mid-April the decision was made in favour of **Ledinek** as the main supplier. The decisive factor was our great experience with CLT technology. "We are convinced of the innovative approach and the coherent system concept", says ante managing director **Jürgen Ante**. This avoids unnecessary or problematic interfaces.

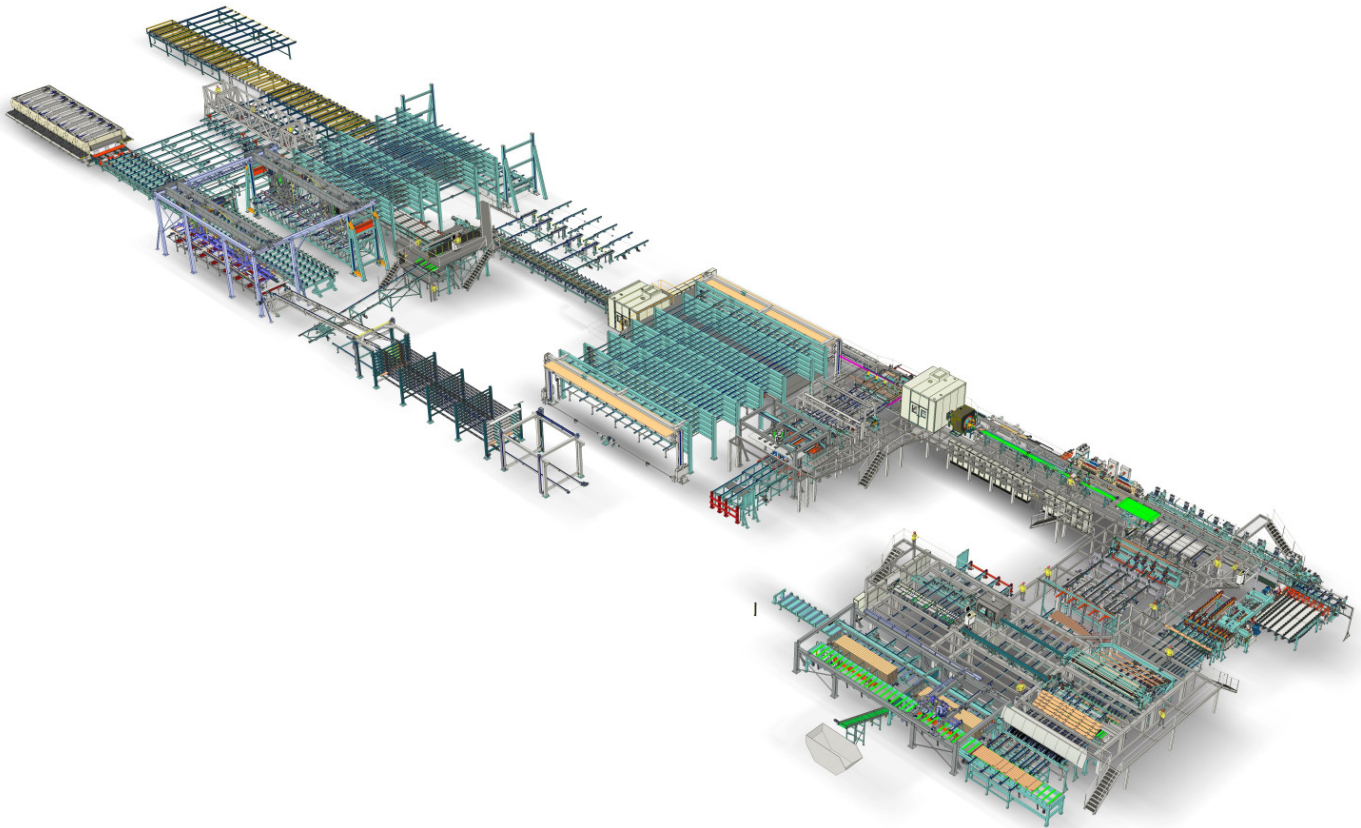
**Ledinek** will supply everything from the raw wood infeed to transporting the raw CLT elements to the sending machine or to the CNC machining centres - including the PC process control system "**X-Lam Manager**"!

When completed, HBS Berga CLT will be able to produce up to a capacity of more than 100,000 m<sup>3</sup>/A. Elements of up to 16m x 3.5m x 360mm are to be manufactured. The individual layers will be prepared with the **Z-Press** into single-layer glued wood panels, which promises airtightness and a higher capacity of pressing in **X-Press**.

Company: **Ante**

www: **BSP**

Location: Berga Sachsen-Anhalt / Germany  
CEO: DI Jügen Ante  
Project leader: DI Hubert Teufel  
Employees: 50  
Timber species: Spruce  
Production capacity: over 100.000 m<sup>3</sup> / Year



## Turnkey CLT production

1. Feedstock package intake, vacuum de-stacking, loading into the measuring chain
2. Moisture control, detection of twist, spring, bow and cup with turning device
3. SUPERPLAN 4V-S400 4-sided pre-planer
4. GOLDENEYE 702 SCANNER with marking station
5. Stacking machine for sorted and marked boards
6. Roller conveyors and chain cross conveyors for buffering the packages
7. Unstacking by layers for 2 qualities with vacuum de-stacker
8. Roller conveyor for layers, chain transporters with singling and loading into lug chain
9. Detection of the boards marked with fluorescent ink in the transverse passage
10. Bypass loop with X-CUT S400 defect chop saw with infeed
11. KONTIZINK L-S120 with separated melamine finger joint glue application
12. Curing deck with 5 levels per level divided into two
13. Superplan 4V S400 lamella planer with output for KVH stacking machine
14. Hot-melt edge gluing **Z-PRESS** for fast assembly bonding of solid wood laminations
15. CLCS 1600 Cross-cut saw for cross lamination panels
16. Multi tray storage (8 trays) for edge-glued cross lamination layers
17. Multi tray storage (5 trays) for longitudinal laminations – bonded to single layer panels
18. Vacuum layer assembly unit with PUR (1K Polyurethane adhesive) surface gluing

19. **X-PRESS 16** - cross laminated timber press with up to 0,8 N/mm<sup>2</sup> pressure
20. Cross CLT panel push off unit with outfeed roll conveyors

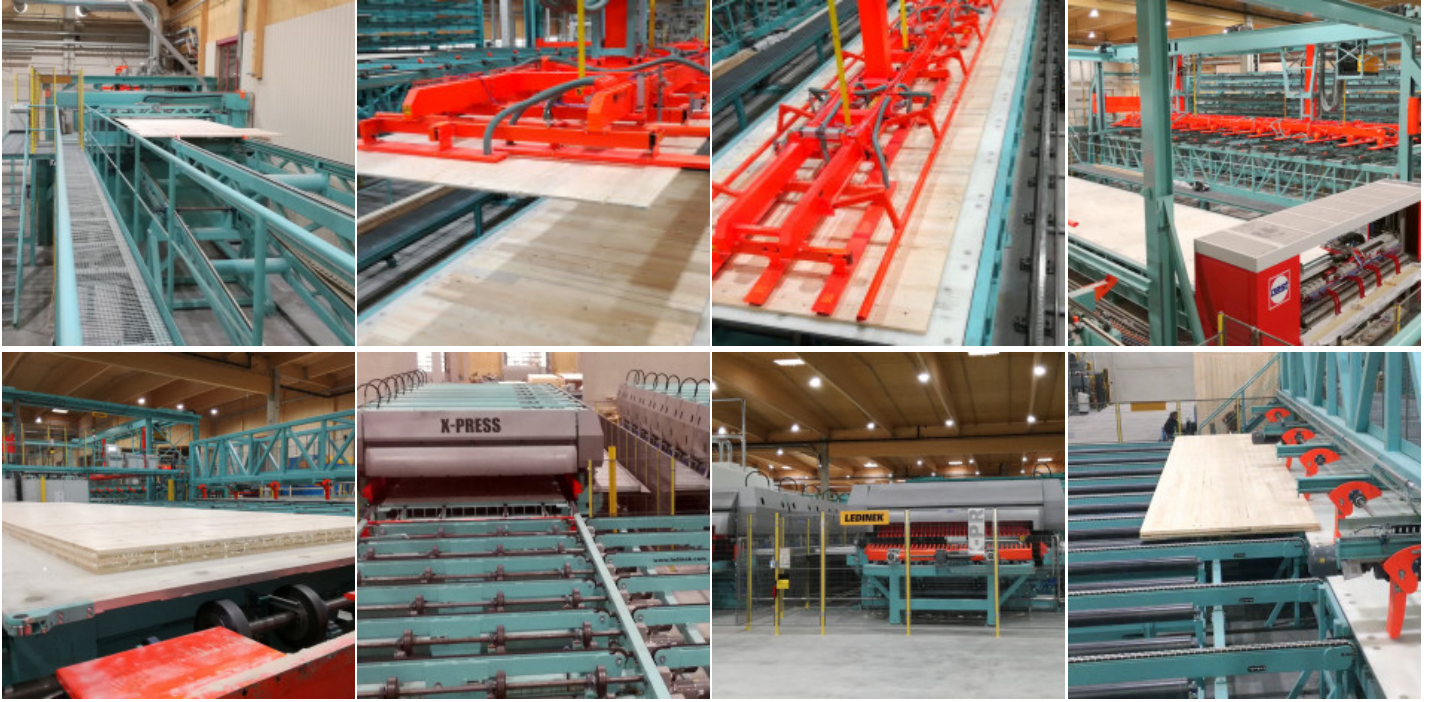
## Facts

- Panel size up to 16 m x 3,5 m x 0,36 m
- Production capacity up to 100.000 m<sup>3</sup>/year
- Shift production up to 150 m<sup>3</sup>
- Integrated edge-gluing system with hot melt adhesive
- Fast PUR (1K Polyurethane adhesive) for surface gluing with cold setting
- Very short pressing cycle
- High flexibility of the CLT production process

## Photo gallery

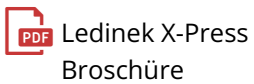




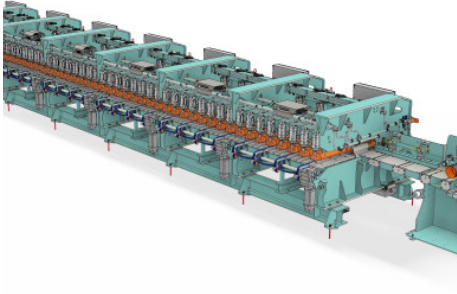


Photos sind Symbolisch

## Video



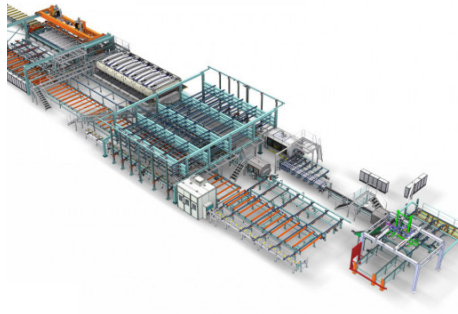
## Related products



### ► Z-Press

Edge gluing press with hot-melt for fast assembly bonding of solid wood laminations. Multiple widths or continuous single-layer panels are produced from edge glued laminations. Suitable for the advanced and high capacity CLT production.

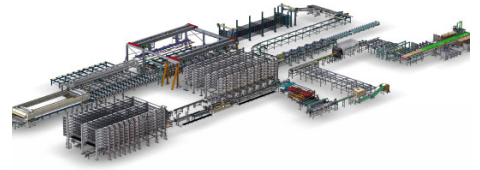
**MORE**



### ► Pilot CLT production line in Sweden

Company Södra Wood invested into a pilot plant for CLT production. The pilot plant supports the Södra team create a marketing and production strategy.

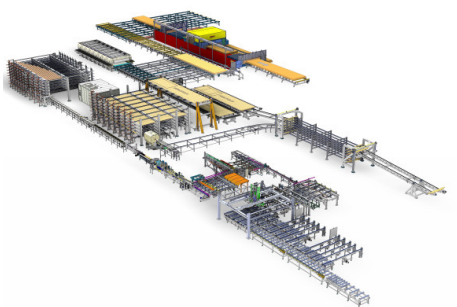
**MORE**



### ► CLT production line France

S.A.S. Piveteau Bois from Sainte Florence has invested in a new industrial production for large format cross laminated timber panels.

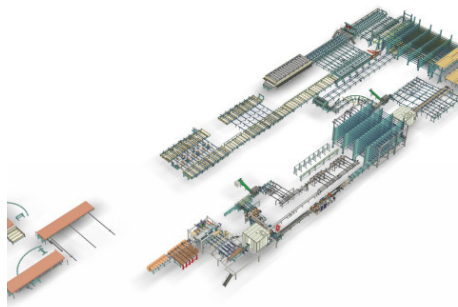
**MORE**



### ► CLT production line Australia

First complete CLT production from one supplier in Australia at XLAM. We got the opportunity to supply a CLT production Turnkey solution.

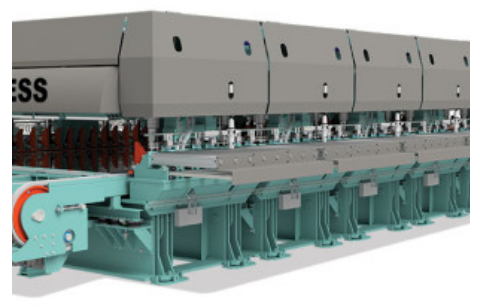
**MORE**



### ► CLT production line in Russia

The Segezha Group from Russia has invested in a complete CLT production facility to expand its mass timber production capacity. The company's new facility - Sokol CLT will produce CLT panels in a wide range of sizes and surface finishes.

**MORE**



### ► X-Press

Universal High-performance press for large size CLT for single Lamelas assembly and edge glued panels. Suitable also for double or multi press systems using interchangeable aluminium PE coated loading tables.

**MORE**

