

LEDINEK - FINGER JOINTING - CONSTRUCTIONAL TIMBER LINE - 12 JOINTS

Solid finger jointed constructional timber line

Plentiful forest resources have made timber a preferred building material for people of Finland. Harsh winter conditions however require a disciplined approach to design and manufacturing of load bearing timber structures. This requires certified, state-of-the-art yet reliable production technology for manufacturing of timber products.

12 joints per minute

Innovative approaches to reduction of cost and saving of resources have convinced the customer to entrust LEDINEK in a building a new powerful production line to replace the existing facility for production of high volume of standard cross sections for own further processing as well as for direct sales to customers. Two EUROZINK COMPACT finger jointing machines were integrated in a single production stream with shared input, cross-cut saw, storage, planer and stacker.

Case:

- production of standard cross sections
- high production volume
- minimal investment
- reduction of heavy labour
- automated control

Key components of the solution:

- Vacuum de-stacker
- Grading and marking station
- X-CUT cross cut saw for defects
- EUROZINK COMPACT finger jointing machines - 2 pieces
- Film tray storage
- EUROPLAN beam planer with chamfering units
- Stacker

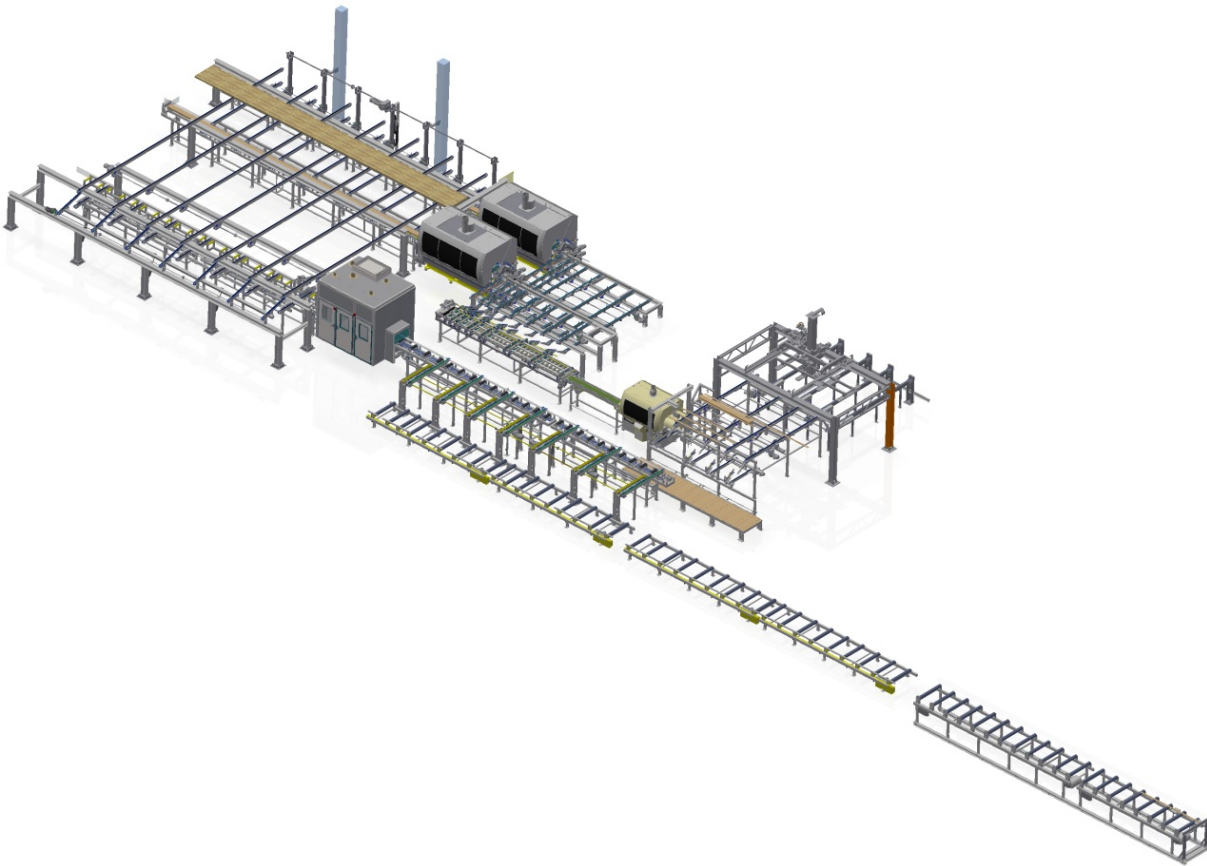
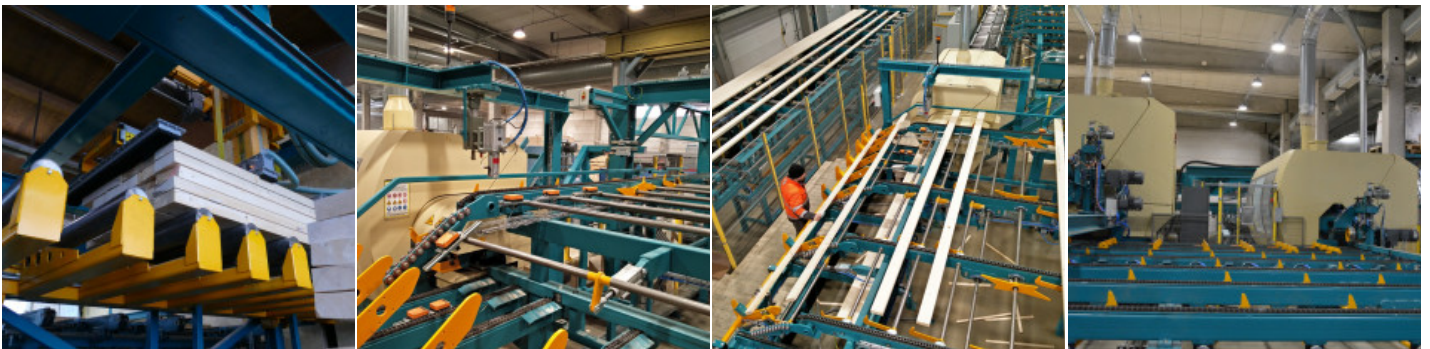



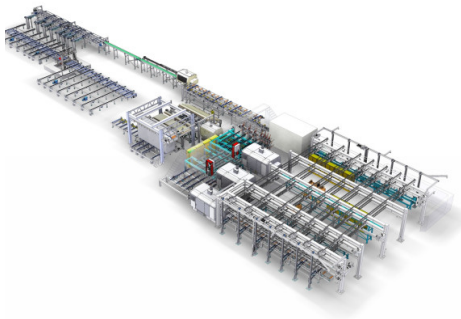
Photo gallery





 [Ledinek complete solutions brochure](#)

Related products



▶ Constructional timber line - 18 joints

The line is equipped with three Eurozink Compact-6 finger-jointing machines as well as two X-Cut defecting saws and one Europlan for final planing.

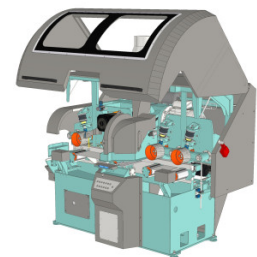
[MORE](#)



▶ Eurozink Compact 800

Strong and productive machine for finger jointing of solid constructional timber

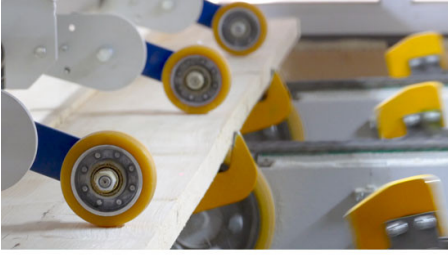
[MORE](#)



▶ X-CUT S400 / S400 L / S200 / S300 XL

High power cross-cut saw for large cross sections

[MORE](#)



▶ **Automation_solutions** ▶ **Vacuum de-stacking**

Complete solutions in machine and plant engineering.

MORE

Every production needs an entrance.

MORE

▶ **Simple stackers**

Perfect package

MORE