



# Complete CLT production solutions

LEDINEK - ENGINEERED TIMBER - CLT PRODUCTION LINE AUSTRALIA

## Turnkey CLT production line for Down under

XLam, a company of the Mayflower Group, commissioned Australia's first large format cross laminated timber plant. The line just recently went into production stage and will shortly start to supply the domestic market with CLT panels. Ledinek got the opportunity to supply a complete Turnkey CLT production.

All machines are integrated under the specially developed X-Lam manager PC based control system with visualization capabilities, production flow control, statistics and production analysis capabilities.

Turn-key solutions for complete CLT production lines from one hand.

XLAM AUSTRALIA

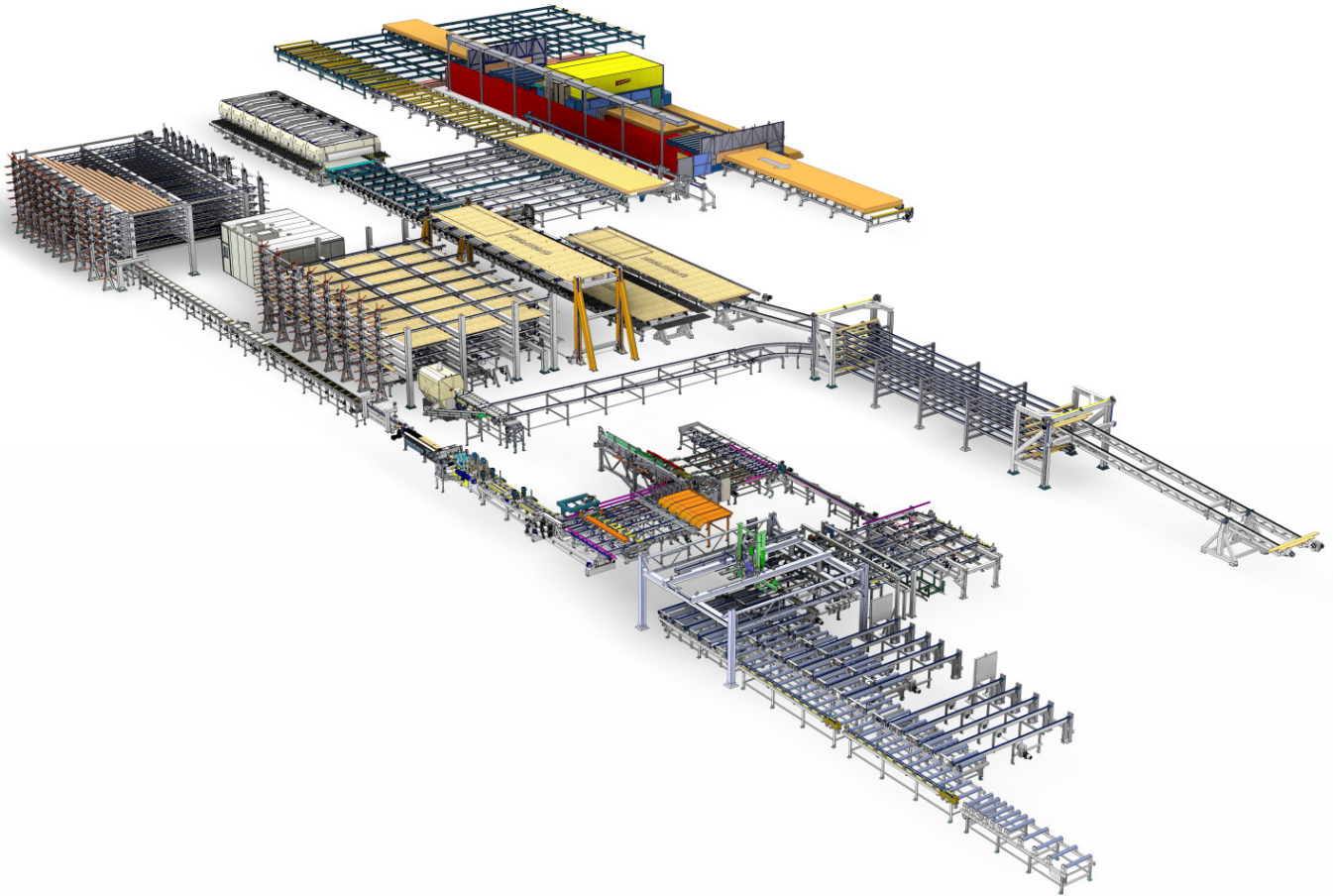
Location: Wodonga / AU

Executive Director: Shane Robertson

Employees: 25

Species: Monterey pine (Pinus Radiata)

Production capacity: 70,000 m<sup>3</sup> / y



## Turnkey CLT production

1. Vacuum de-stacking of 3 different timber qualities
2. Detection of cup & annual rings
3. Quality and defect marking, moisture meter, reject gate
4. Infeed system to finger jointing machine
5. KONTIZINK 20 200 kN finger jointing line with capacity up to 20 pcs/min; 72 m/min
6. Curing tray storage with lug chain
7. MULTIPLAN planer for laminations for high speed and perfect finish
8. Multi tray storage for longitudinal laminations
9. X-CUT Heavy duty cross-cut saws for cross laminations
10. In-feed and out-feed to Multi tray storage for cross laminations
11. Multi tray storage (6 trays) for cross laminations
12. Dedicated vacuum stacking device for cross laminations
13. CNC controlled PUR (1 component polyurethane) glue application unit

## Facts

- Up to 16 m x 3,6 m x 0,36 m panel size
- Up to 70.000 m<sup>3</sup>/year
- 100 m<sup>3</sup> Shift production
- High flexibility of production

14. Solid fast movable PE coated table for billet assembly
15. X-PRESS 16 - cross laminated timber press with up to 0,8 N/mm<sup>2</sup> pressure
16. 2nd X-PRESS table with ready pressed billet
17. Longitudinal CLT panel push off unit
18. CLT billet ready to be loaded to the CNC router
19. CNC joinery machine working on the billet
20. Space for 2nd CNC router with handling


## Photo gallery





**Video**

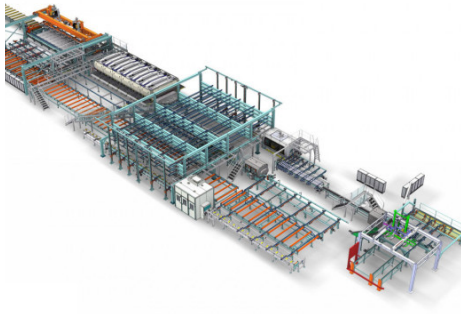
**Video**

 Ledinek X-Press product brochure

**LEDINEK IN ACTION AT XLAM**

A GRANULAR LOOK AT THE PROCESSES USED BY XLAM'S CROSS-LAMINATED TIMBER PLANT FOR LARGE-SIZE ELEMENTS DEMONSTRATES THE ROLE OF EQUIPMENT FROM SUPPLIERS SUCH AS LEDINEK IN SECURING EFFICIENT, STREAMLINED CLT DELIVERY.

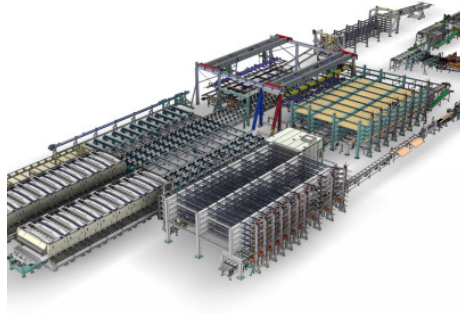
## related products



### ▶ Pilot CLT production line in Sweden

Company Södra Wood invested into a pilot plant for CLT production. The pilot plant supports the Södra team create a marketing and production strategy.

[MORE](#)



### ▶ CLT production line Norway

Company Splitkon AS from Åmot in Norway has invested in a new industrial production for large format cross laminated timber panels.

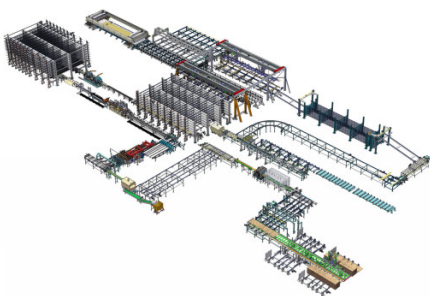
[MORE](#)



### ▶ CLT production line France

S.A.S. Piveteau Bois from Sainte Florence has invested in a new industrial production for large format cross laminated timber panels.

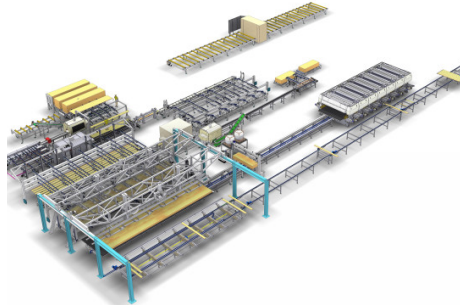
[MORE](#)



### ▶ CLT production line Japan

First complete CLT production from one supplier in Japan at Cypress Sunadaya Co., Ltd. We got the opportunity to supply a CLT production Turnkey solution.

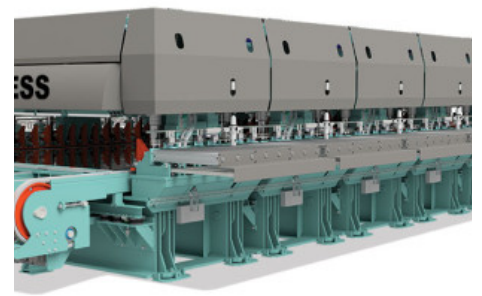
[MORE](#)



### ▶ CLT production line Latvia

Complete solution for production of cross laminated timber

[MORE](#)



### ▶ X-Press

Cross laminated timber press CLT Press XPress for excellent quality products

[MORE](#)

