



Complete CLT production solutions

LEDINEK - ENGINEERED TIMBER - CLT LINE IN GERMANY

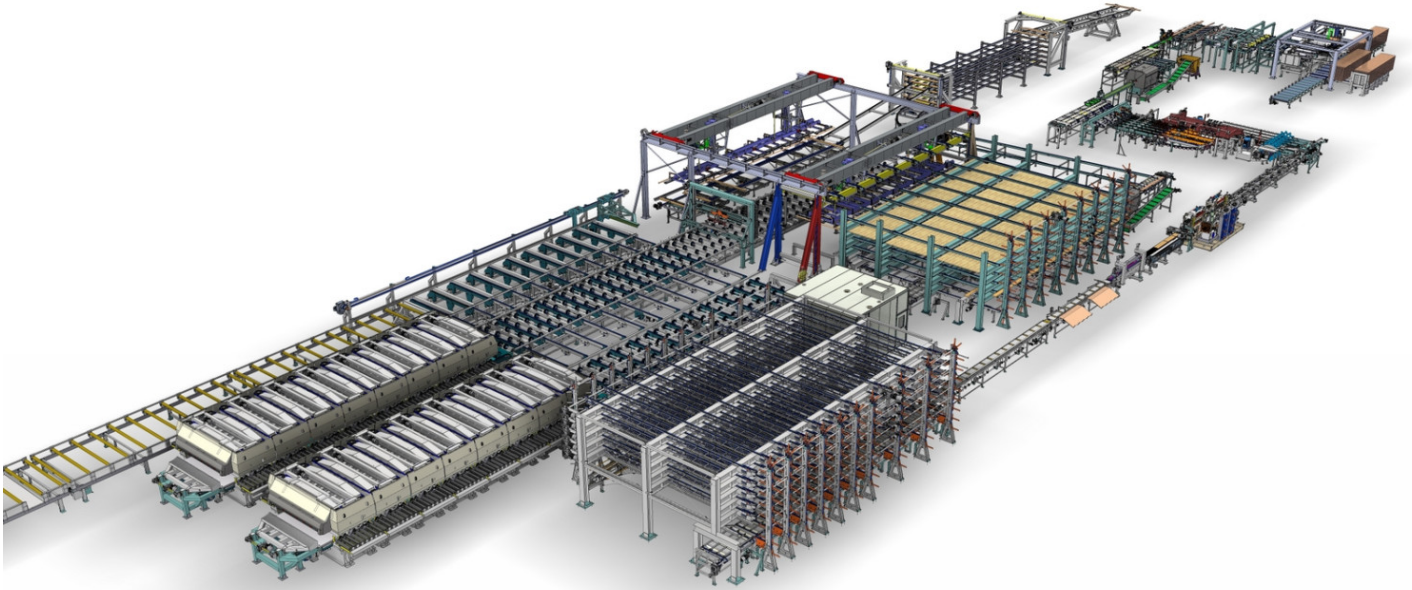
CLT production line for Binderholz in Burgbernheim

The company Binder has invested in a new industrial production plant of BBS XL large format cross-laminated timber panels for its CLT plant in Burgbernheim/Germany. The line at Binderholz is currently ramping up and will shortly be supplying the market with high quality BBS cross laminated timber panels. Ledinek was entrusted with the core of the CLT BBS production plant. The production line was delivered, from lamella planing to finished pressed BBS XL cross-laminated timber panels, by company Ledinek.

The 2 newly developed **Z-Presses** are also being used for the first time to glue the lamellae together using hot melt adhesive. Multiple widths or single-layer panels are produced from laminations glued on the narrow side. Such pre-glued single-layer panels are unavoidable for the progressive and high-performance, state of the art, CLT production and thereby initiate a new area and quality in the CLT production.

Company: **Binderholz**
www: **[Binderholz BBS XL](https://www.binderholz.com)**

Location: Burgbernheim / Deutschland
Wood species: Spruce
Production capacity: over 100.000 m³ / Year



Layout is symbolic

Turnkey CLT production

1. **Ledinek planer** for laminations; high speed and perfect finish
2. **Z-Press** Hot-melt edge gluing for fast assembly bonding of solid wood laminations
3. Multi tray storage for longitudinal laminations – bonded to single layer panels
4. **Planer for laminations** used for the cross layer; high speed and perfect finish
5. **Z-Press** Hot-melt edge gluing for side boards and narrow laminations
6. Ledinek **cross-cut saw** for cross laminations up to 320 mm width
7. In-feed to Multi tray storage for cross laminations
8. Multi tray storage (10 trays) for cross laminations
9. External infeed system for cross layers (single layer panels or different timber species)
10. Vacuum layer assembly unit for Longitudinal Layers
11. Vacuum layer assembly unit for Cross Layers
12. PUR (1K Polyurethane adhesive) surface gluing
13. Solid fast movable PE coated aluminium table for CLT panel assembly up to 120 m/min
14. First **X-PRESS 16** - cross laminated timber press with up to 0,8 N/mm² pressure
15. Second **X-PRESS** 16 m x 3,5 m x 0,36 m
16. Cross CLT panel push off unit with outfeed roll


Facts

- Production capacity over 100.000 m³/year
- Fast PUR (1K Polyurethane adhesive) for surface gluing with cold setting
- Very short pressing cycle
- High flexibility of the CLT production process

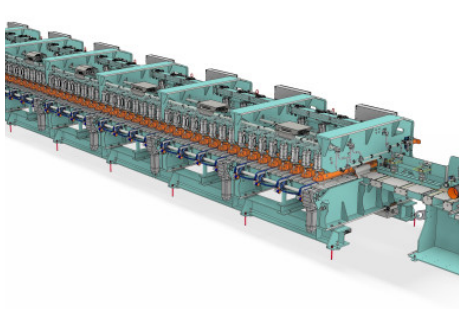
and chain conveyors

Photo gallery



 Ledinek X-Press product brochure

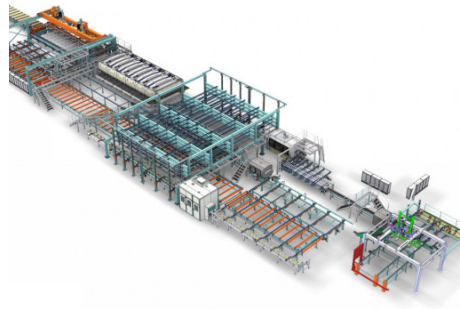
Related products



▶ Z-Press

Edge gluing press with hot-melt for fast assembly bonding of solid wood laminations. Multiple widths or continuous single-layer panels are produced from edge glued laminations. Suitable for the advanced and high capacity CLT production.

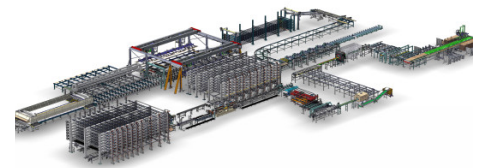
[MORE](#)



▶ Pilot CLT production line in Sweden

Company Södra Wood invested into a pilot plant for CLT production. The pilot plant supports the Södra team create a marketing and production strategy.

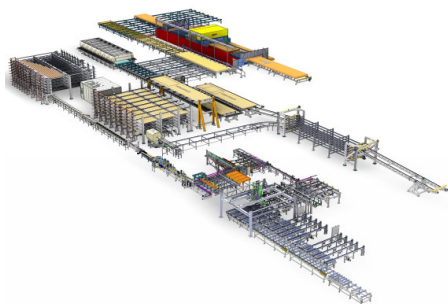
[MORE](#)



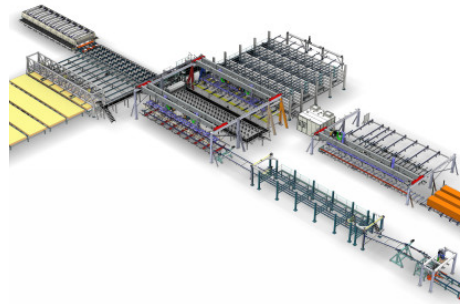
▶ CLT production line France

S.A.S. Piveteau Bois from Sainte Florence has invested in a new industrial production for large format cross laminated timber panels.

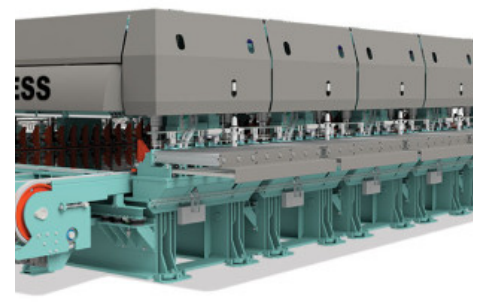
[MORE](#)



▶ CLT production line Australia



▶ CLT production line in Ukraine



▶ X-Press

Cross laminated timber press
CLT Press XPress for excellent

First complete CLT production from one supplier in Australia at XLAM We got the opportunity to supply a CLT production Turnkey solution.

[MORE](#)

The UHLK company from Korosten, Ukraine is another investor who has entrusted Ledinek with the order to design, assemble and put into operation a CLT line.

[MORE](#)

quality products

[MORE](#)