



# Complete CLT / GLT production solutions

LEDINEK - ENGINEERED TIMBER - ARBOREAL: THE ONLY MASS TIMBER PLANT IN URUGUAY AND ONE OF THE LARGEST IN LATIN AMERICA

## Arboreal: the only Mass Timber Plant in Uruguay and one of the largest in Latin America.

The introduction of the Arboreal project in Uruguay marks a significant milestone in the construction and environmental sectors of Latin America. As of early 2022, Uruguay is home to the region's first large mass timber factory, following strategic acquisition and expansion efforts led by U.S. businessman Mark Crandall and Uruguayan entrepreneur Matias Abergo. The project began with the acquisition of the largest pine sawmill of Uruguay, located in Tacuarembó, northern Uruguay, with a production of 240,000 m<sup>3</sup>. The feedstock used by Arboreal is 100% FSC, obtained from local Southern Yellow Pine plantations. Arboreal is committed to establishing a sustainable timber industry in Uruguay.

The mass timber plant, which is touted as the largest and most advanced of its kind in Latin America, began its operations with a production capacity of 50,000 m<sup>3</sup> per year. In Tacuarembó, the factory manufactures structural finger-jointed solid timber, cross-laminated timber (CLT), and glued laminated timber factory, with the goal of being a world-class supplier of construction elements and building projects. Therefore, Arboreal has established a Technical Office in Montevideo, responsible for the design and engineering of the timber projects, in an integrated workflow aligned with global efforts to combat climate change. According to Matías Abergo, President of Arboreal, the utilization of mass timber for construction is pivotal in reducing CO<sub>2</sub> emissions. The construction sector, which is responsible for nearly 40% of global greenhouse gas emissions, can significantly benefit from the carbon sequestering capabilities of mass timber structures.

Choosing Ledinek as the supplier for its mass timber manufacturing line was a strategic decision for Arboreal, emphasizing the necessity for experience and reliability in pioneering such a significant project. Ledinek's reputation for delivering state-of-the-art machinery ensures that the plant's operations are both efficient and up to global standards.

This initiative not only positions Uruguay as a leader in the mass timber market but also promotes sustainable development of wood construction, boosting local industries and environmental sustainability. The Arboreal plant serves as a model for future developments in eco-friendly industrial practices and building in Latin America and beyond.

Company: **Arboreal SA**

LinkedIn: **Arboreal**

Production site: Tacuarembó/ Uruguay

Technical and Commercial Office: Montevideo, Uruguay

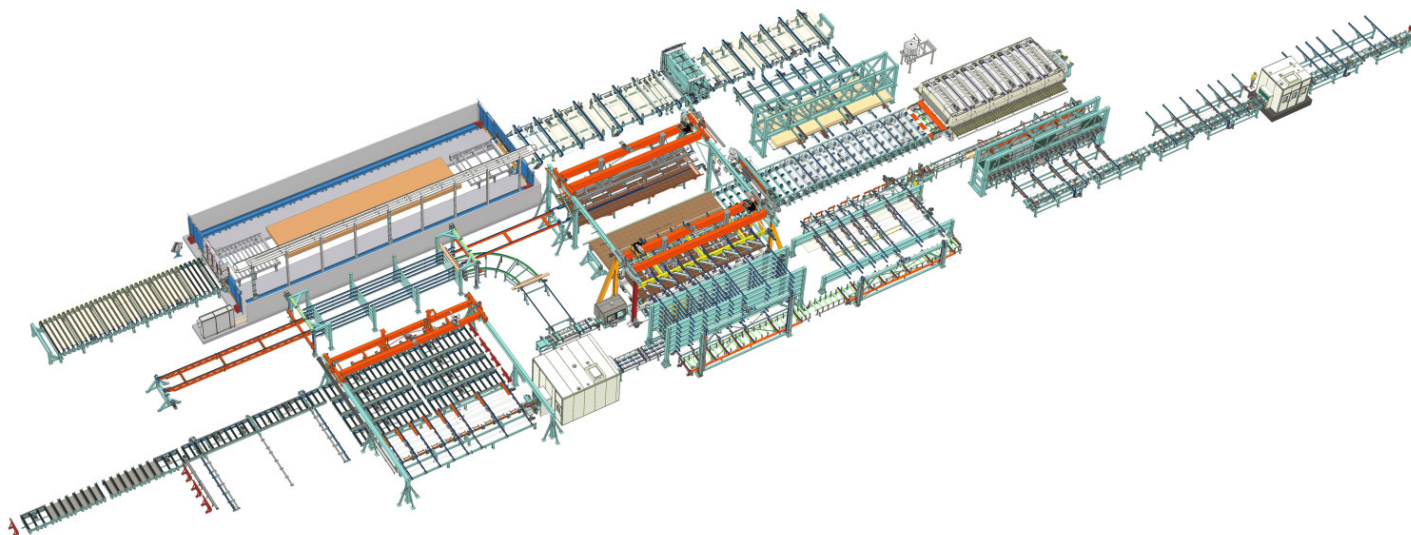
President: Matias Abergó

General Manager: Craig Penfold

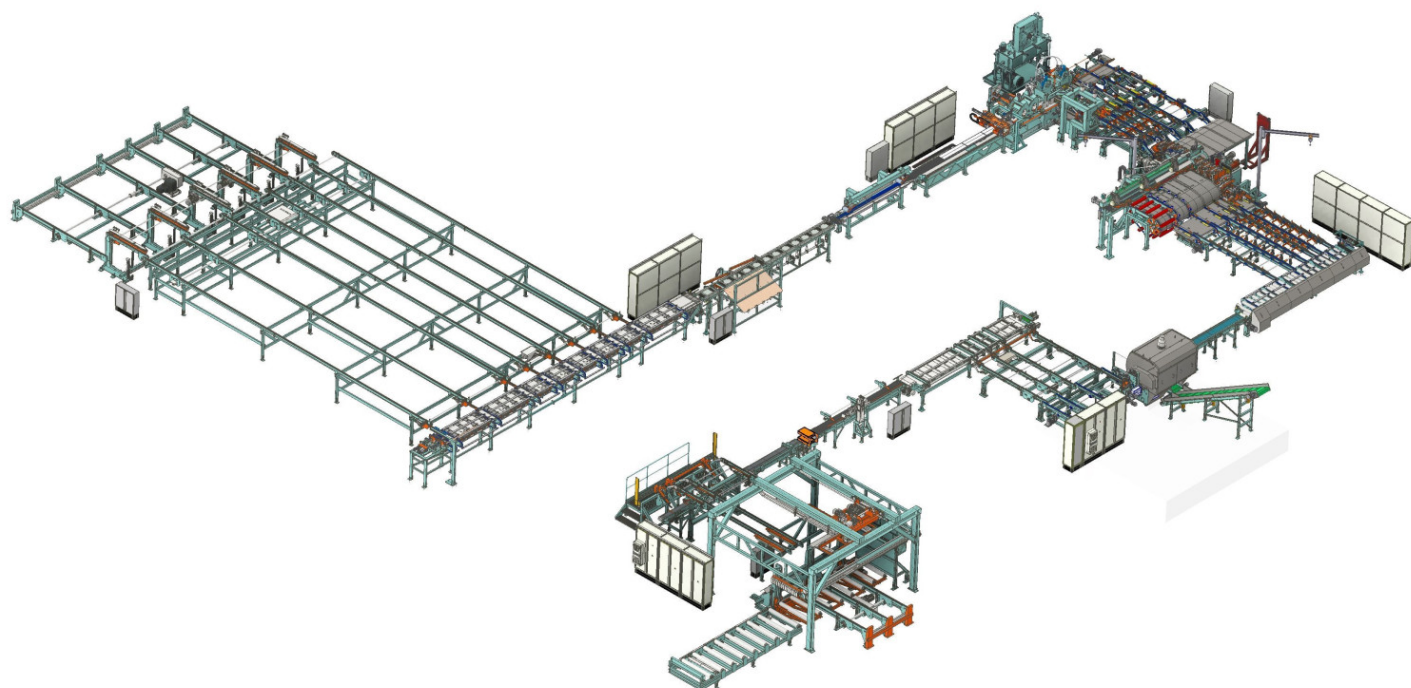
Production staff: 20

Wood species: Southern Yellow Pine (Pinus taeda and P. elliottii)

Production capacity: 50.000 m<sup>3</sup> / Year



CLT / GLT production line



Finger jointing line

**CLT and GLT production combo**

**Facts**




1. Vacuum destacking device for packages
2. Marking station with flip unit for boards
3. Reading station for cut marks and moisture meter
4. X-CUT S400L defect cutting saw
5. KONTIZINK 2000 finger jointer machine
6. Rollcase conveyor with side sweep lug chain
7. PUR glue curing storage 15 m
8. Stacking machine for finger jointed laminations
9. Roll Conveyor for 4 packages with shuttle and vacuum destacking to planer
10. MULTIPLAN 4V-S200 all-side planer for laminations
11. X-CUT S200 with Infeed for cross lamella cutting
12. 3 story storage with back holder for short laminations
13. 5 level storage for longitudinal layers
14. Vacuum stacking machine for preparation of layers before pressing
15. X-Press 12 Cross timber press
16. Rake off station for CLT Panels with lifting device
17. 2 level glulam lamella storage with singling
18. Maxipress 1000-12 for standard glulam
19. Europlan 600-4V+4F S60 beam planer up to 600 x 300 mm
20. Sanding machine for CLT

- Up to 12 m x 3,5 m x 0,35 m panel size
- Production capacity up to 50.000 m<sup>3</sup>/year
- 100 m<sup>3</sup> Shift production
- Z-Press for innovative, safe and reliable production
- PUR 1K glue with cold setting
- High flexibility of the CLT production process

## Photo gallery

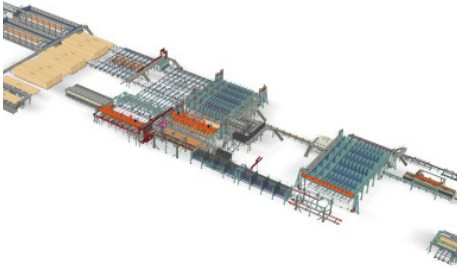




 Ledinek X-Press  
Broschüre

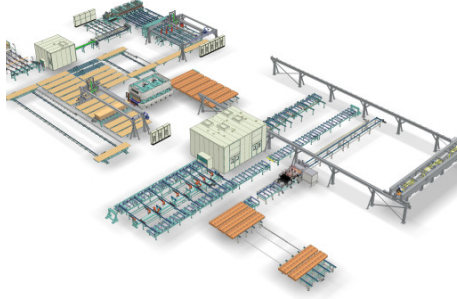


## Related products



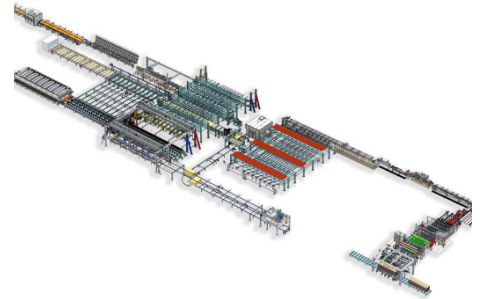
### ▶ Volume CLT production line in Sweden

After the first pilot plant for the CLT production, Södra Building Systems made another bolt move and build a big volume plant.

[MORE](#)

### ▶ Standard cross laminated timber plant in Portugal

The company Arolla Lda invested in a plant for the production of standard CLT elements with widths of 120 and 125 cm and produces mainly for its own projects and for the local market.

[MORE](#)

### ▶ CLT production line in Canada

Element5 has invested in a large-scale facility to expand its mass timber production capacity. The company's new facility will produce CLT panels and glulam beams in a range of sizes, offering the market a versatile selection of mass timber products.

[MORE](#)